

LED Street Light

Item No: BSGMx-20W /30W/50W/100W



- LED light source : Samsung/epistar
- Driver:CE Driver
- Beam angle:110°
- Superior colour rendering >80% MAX
- Saves up to 70% energy compared to halogen spotlights
- Long service life and less maintenance costs
- No UV or IR radiation thus no discolouration of sensitive

BosunLighting , a manufacturer , focuses on LED commercial lighting.

Innovation is our core culture. With professional and creative R&D and advanced laboratory, Bosunlighting owns 26 patents and [SAA/C-Tick/CE/CB/CCC/ROHS](#) certification.

10 year's experience in project lighting is our advantage. The projects are the followings:

- 29th Beijing Olympics Games venues in 2008
- Kunming CHANGSHUI International Airport, etc

Our Standard & effective QC system and after-sale service system are your assurance.

Ideal for:

Widely used in arterial road and secondary main road;
residential quarters and factory;
Tourist attractions, parking lot and town road;
Family courtyard and breeding base and so on.

Product Parameter

Control device

LED driver providing : 80V~265V 50-60 Hz,
Light Source :Samsung/epistar
Beam angle : 110°
IP Class: IP65



Mounting

The led streetlight has an universal lamp size making it easy to assemble

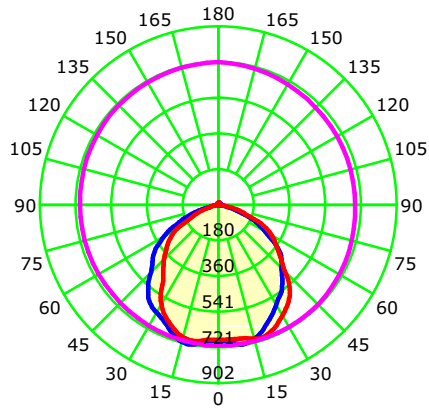


Long Guarantee

Bosun led light offers a **5year** system guarantee for LED street Light. The guarantee covers the luminaries, driver and Long Life light source.

Light Distribuion Curve

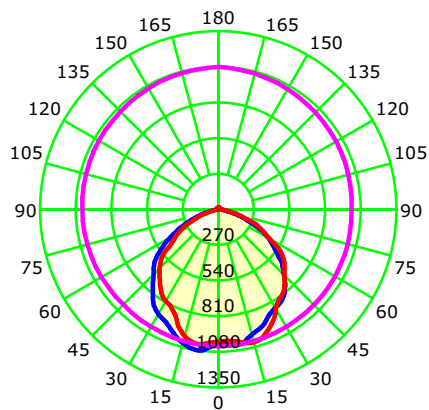
20W 110°



Flux Out: 1467.15lm

Height	Avg./Nadir: E	Beam Angle:111.5°	Diameter / Area
1.0m	216.42/ 689.11lx		2.94m / 6.78sq.m
2.0m	54.11/ 172.28lx		5.88m / 27.12sq.m
3.0m	24.05/ 76.57lx		8.81m / 61.01sq.m
4.0m	13.53/ 43.07lx		11.75m / 108.47sq.m
5.0m	8.66/ 27.56lx		14.69m / 169.48sq.m
6.0m	6.01/ 19.14lx		17.63m / 244.05sq.m
7.0m	4.42/ 14.06lx		20.57m / 332.18sq.m
8.0m	3.38/ 10.77lx		23.50m / 433.86sq.m
9.0m	2.67/ 8.51lx		26.44m / 549.11sq.m
10.0m	2.16/ 6.89lx		29.38m / 677.91sq.m

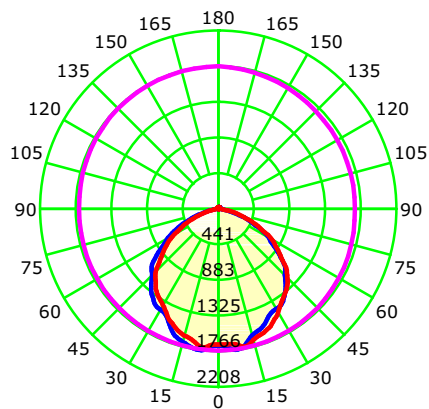
30W 110°



Flux Out: 2063.21lm

Height	Avg./Nadir: E	Beam Angle:110.0°	Diameter / Area
1.0m	922.52/ 1018.89lx		2.85m / 6.40sq.m
2.0m	80.63/ 254.72lx		5.71m / 25.59sq.m
3.0m	35.84/ 113.21lx		8.56m / 57.57sq.m
4.0m	20.16/ 63.68lx		11.42m / 102.36sq.m
5.0m	12.90/ 40.76lx		14.27m / 159.93sq.m
6.0m	8.96/ 28.30lx		17.12m / 230.30sq.m
7.0m	6.58/ 20.79lx		19.98m / 313.46sq.m
8.0m	5.04/ 15.92lx		22.83m / 409.42sq.m
9.0m	3.98/ 12.58lx		25.69m / 518.17sq.m
10.0m	3.23/ 10.19lx		28.54m / 639.72sq.m

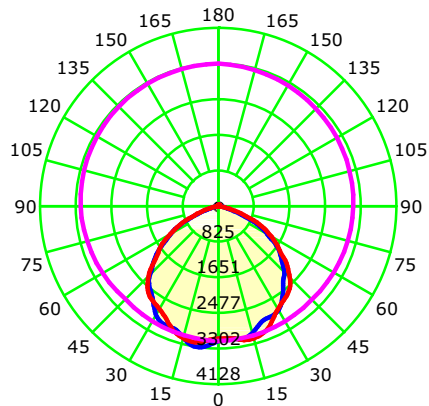
50W 110°



Flux Out: 3449.79lm

Height	Avg./Nadir: E	Beam Angle:109.8°	Diameter / Area
1.0m	542.04/ 1696.93lx		2.85m / 6.36sq.m
2.0m	135.51/ 424.23lx		5.69m / 25.46sq.m
3.0m	60.23/ 188.55lx		8.54m / 57.28sq.m
4.0m	33.88/ 106.06lx		11.39m / 101.83sq.m
5.0m	21.68/ 67.88lx		14.23m / 159.11sq.m
6.0m	15.06/ 47.14lx		17.08m / 229.12sq.m
7.0m	11.06/ 34.63lx		19.93m / 311.86sq.m
8.0m	8.47/ 26.51lx		22.77m / 407.32sq.m
9.0m	6.69/ 20.95lx		25.62m / 515.52sq.m
10.0m	5.42/ 16.97lx		28.47m / 636.44sq.m

100W 110°



Flux Out: 6815.05lm

Height	Avg./Nadir: E	Beam Angle:111.2°	Diameter / Area
1.0m	917.27/ 3123.26lx		2.92m / 6.70sq.m
2.0m	254.32/ 780.82lx		5.84m / 26.80sq.m
3.0m	133.03/ 347.03lx		8.76m / 60.29sq.m
4.0m	63.58/ 195.20lx		11.68m / 107.19sq.m
5.0m	40.69/ 124.93lx		14.60m / 167.48sq.m
6.0m	28.26/ 86.76lx		17.52m / 241.18sq.m
7.0m	20.76/ 63.74lx		20.44m / 328.27sq.m
8.0m	15.89/ 48.80lx		23.36m / 428.76sq.m
9.0m	12.56/ 38.56lx		26.29m / 542.65sq.m
10.0m	10.17/ 31.23lx		29.21m / 669.94sq.m



FOUR reasons why our patent solar streetlight so popular in HK fair are as below

Revolutionary

1. Continuous working normally during 30 raining days compared to normal solar streetlight in the market can only working 3-5 raining day.
2. When after 24.00 o'clock, there is not so much car and people. In order to save energy to make sure the battery having enough power, the brightness of our patent solar streetlight can gradually reduce to make sure the safety of the traffic while the other is reduce suddenly from 100% to 60%, then to 30%, which easy to causing traffic accident.
3. Super long service life up to 3 years warranty or more because our patent control system can solve the problem of over charging and over discharging of battery.
4. We have a series of this solar patent streetlight from 20W 30W 50W 100W to satisfy difference environment

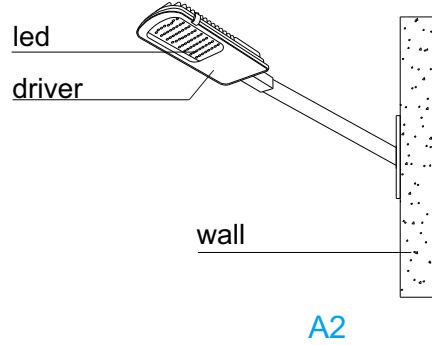
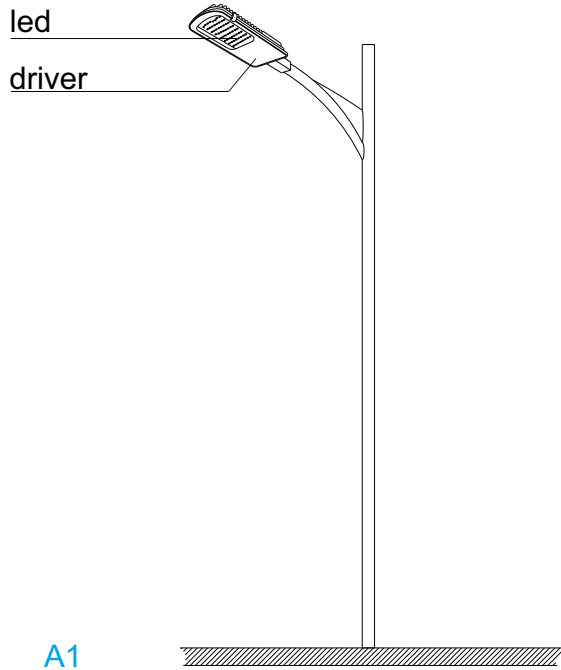
SOLAR-POWER-STORAGE-BATTERY

Germany GEL

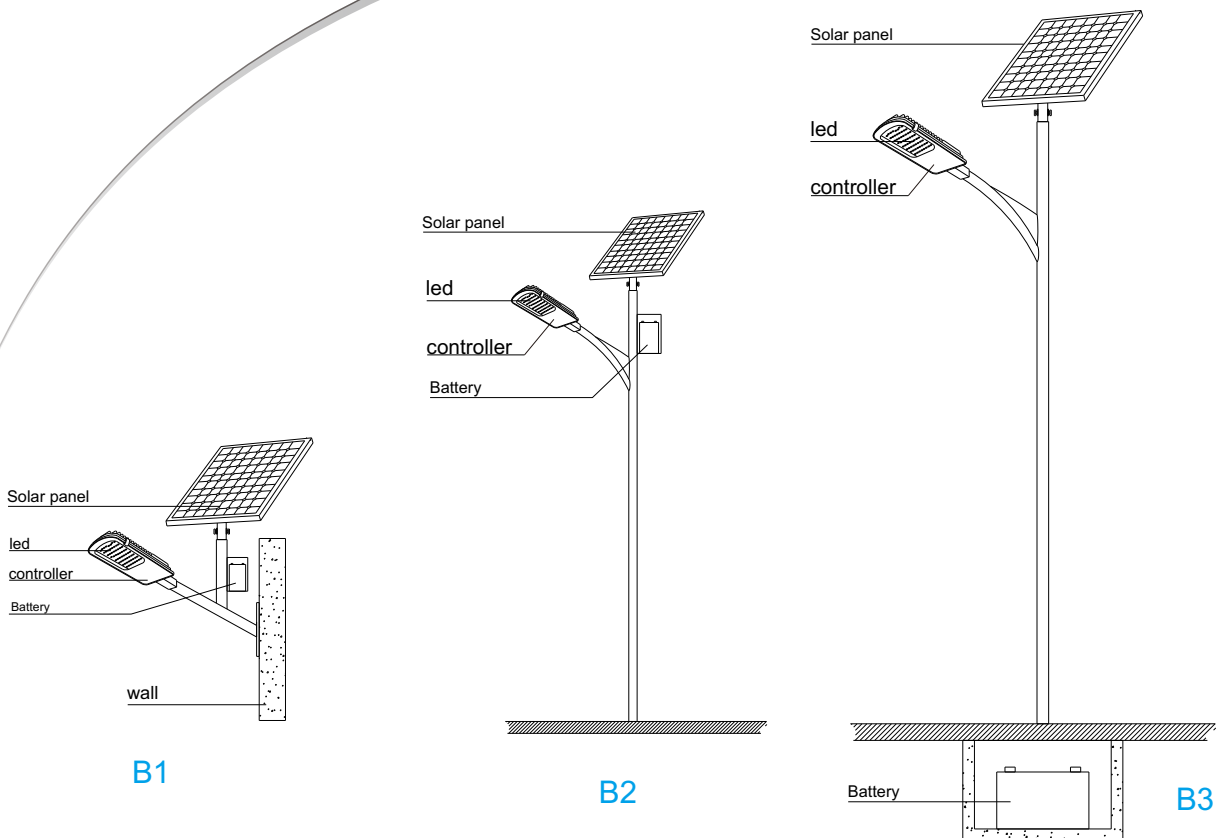
- ◎ Good corrosion resistance, improved battery cycle life
- ◎ Strong charge acceptance ability, good low temperature discharge characteristics
- ◎ With superior overcharge and deep discharge ability, strong deep discharge ability after backilling.
- ◎ Can be placed in any direction using (except upside down)
- ◎ Using lead seal and resin glue double sealing, ensure that the battery sealing in Underwater short-term use, greatly reducing battery maintenance frequency.

Installation method

normal streetlight



solar streetlight



Family



BSSTL20W



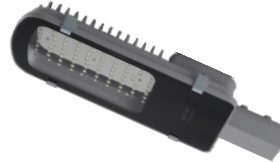
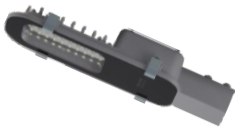
BSSTL30W



BSSTL50W



BSSTL100W



Product Specifications

Model NO	CCT (K)	Voltage (V)	CURRENT (Ma)	Power (W)	Size	Unit weight	LUMINOUS INTENSITY (lm)
BSGMX-20W	3000~6000	85-275	300	20	352*115*65	1.05 kg	1900
BSGMX-30W	3000~6000	85-275	300	30	390*145*65	1.42 kg	2763
BSGMX-50W	3000~6000	85-275	300	50	455*200*70	2.39 kg	4623
BSGMX-100W	3000~6000	85-275	300	100	615*280*80	4.44 kg	9052

Product packaging

Model NO	N.W./kg	G.W./kg	inner box	master carton	Quantity
BSGMX-20W	16.96	19.14	375*113*75	380*318*470	16/pc
BSGMX-30W	11.36	12.85	415*150*75	425*315*320	8/pc
BSGMX-50W	11.95	13.85	475*205*75	485*390*220	5/pc
BSGMX-100W	8.8	10.20	635*285*95	645*200*300	2/pc

Use scene

