

Technical Specification

12.8V200Ah LFP Cell

Sufficient capacity 、 High cycle life

- Safety LFP cell :
Use safety LFP cell, Passed multiple certifications.
- Built-in protection plate:
With over voltage, over charge, over discharge, over current, short circuit protection, and bluetooth monitoring for optional.
- Voltage balancing function :
With voltage balance function, improve the consistency of the cell, ensure the charging and discharging capacity of the cell.
- High cycle times:
In the cycle life, not less than 4000 cycles of charge and discharge.
- Lighter weight:
High energy density, about 40% of the weight of the same capacity lead acid battery.
- Wide temperature range :
Range of -10~55°C normal use, low temperature environment still stable discharge.
- Ip65 Protection grade:
Excellent waterproof performance, wind blowing rain does not affect the normal use of the battery.
- Easy installation :
The same size as lead acid battery, plug and play.



Bluetooth monitor (Optional)

Bluetooth monitoring for optional, user can check the working status of the battery through the APP on the phone.
The information displayed below:

- Charge/Discharge current
- Battery voltage
- State of charge(SOC)
- battery temperature
- Protection function status(On/Off)
- State of health(SOH)
- cycle record
-

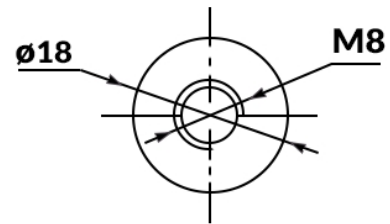
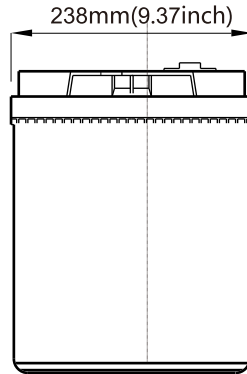
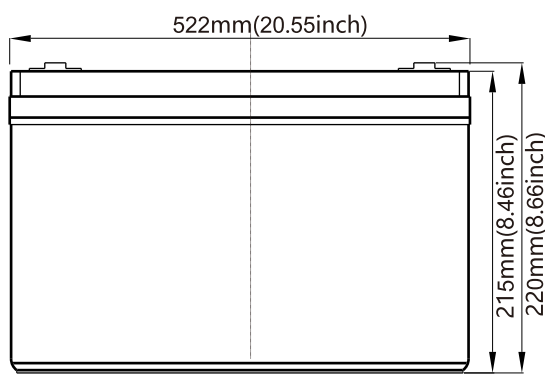
Note:IOS and Android version display the same information.



www.kweightpower.com

Technical Data Sheet

12.8V200Ah LFP Cell



Connection Terminal: M8 Bolt

Item	12200BT
Nominal Voltage	12.8V
Rated capacity	200Ah
Charge cut-off voltage	14.6V ±0.2V
Discharge cut-off voltage	10V
Standard charging current	100A
Maximum continuous discharge current	100A
Peak discharge current	200A (3s)
Internal resistance	<20mΩ
Equalizing current	<100mA
Battery monitor	4000 s, 80% DOD Condition
Cycle life	IP65
IP Grade	5%≤RH≤85%
Temperature range (discharge)	-10--55°C
Temperature range (charging)	0--45°C
Temperature range (storage)	15--25°C
Connection terminal	M8
Shell material	ABS Plastic
Weight	27.0Kg
Dimension (L x W x H)	522*238*220 ±2mm

* When the battery temperature is lower than 0 °C, the charging power automatically reduced.