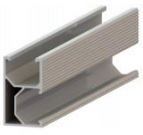






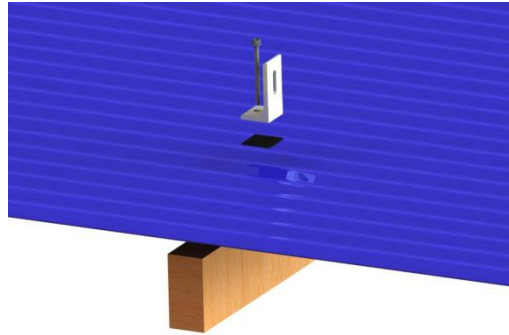
Installation Manual for Walkway

Step1: we must know the Components List.

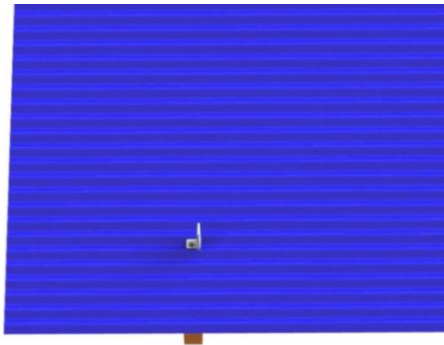
Rail	L-Foot	Walkway	ST6. 3*60	Nuts
				

Step 2: Installing screw with L-feet on metal roof.

1. We need to confirm the mounting point and align the holes of the L foot to the mounting point.



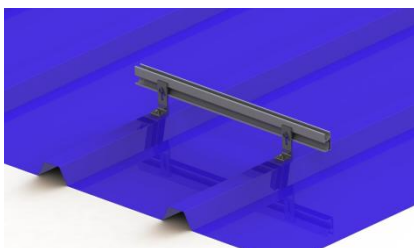
2. Using a drill, drive the screws into the tin roof.



We can fix the mounting rail at any side of L-foot kit according to the actual condition

Rotate the back waterproof gasket around the bolts on the tile surface, and seal with glass glue

Step 3: Installing Rail by the side of L-foot kit as bellow:



When we installed L-foot, and we can fix the rail at any side of L-foot kit according to the actual condition

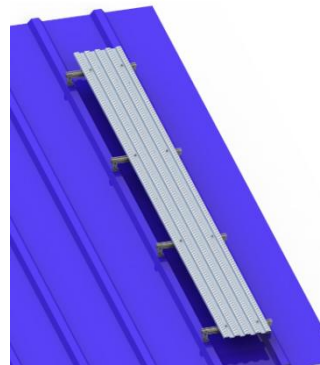
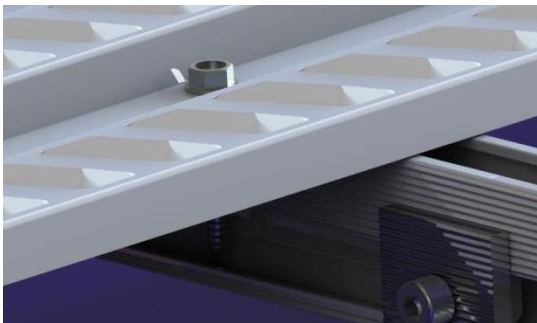
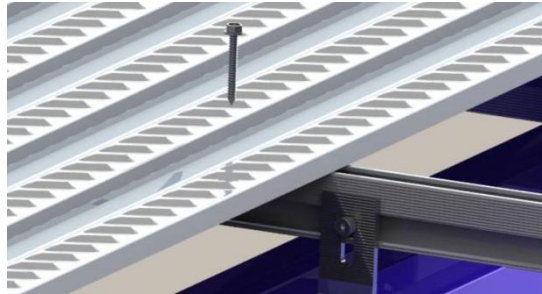
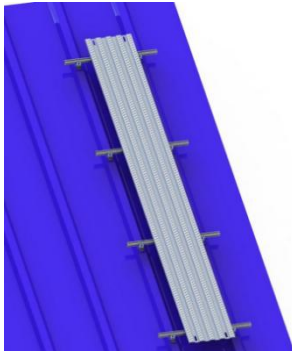
We use M8*25 inner-hexagonal socket bolt (contain 1 flat,1 spring,1 aluminum nut) to fix.

The space between each 2 rails should be between

1~1.3m。

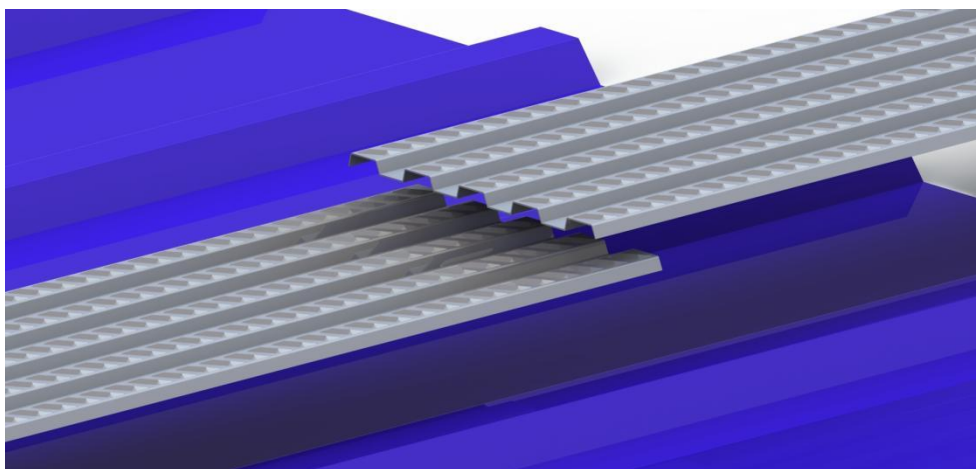
Step 4 :Putting walkway on the rail, drilling through both walkway and rail with ST6.3*60 screw.

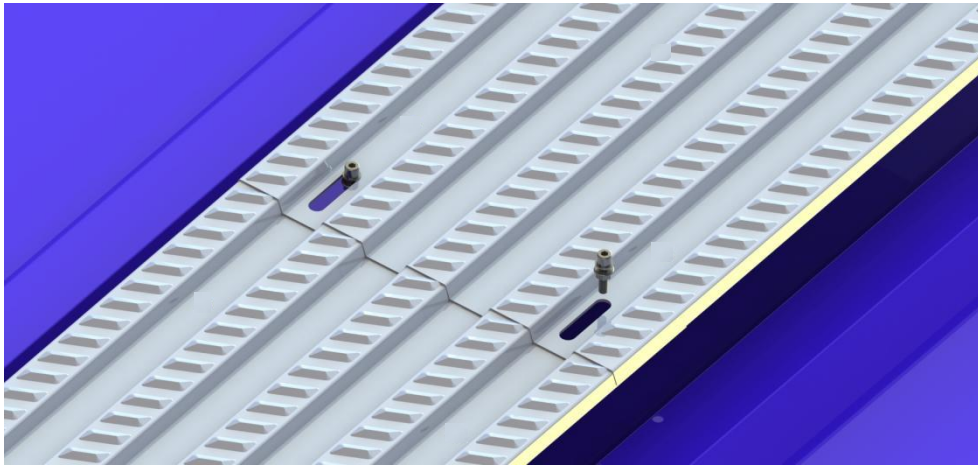
After walkway is settled, locate the position of rail. We can use 6.3*60 steel screw to connect walkway and rail.



Step 5:Connection between two walkways.

If the walkway is shorter than expected, we can superpose the end of one walkway onto the end of settled walkway. Then, we can use nuts to fasten these two walkway.





Make sure all parts fixed steady. End.