

● **MEGA WALKWAY BOARD**



Material : Carbon steel with magnesium-aluminium-zinc coating
Size:400x4000mm / 500x4000mm **Thickness :**1mm
Load-Bearing : 200 Kg per meter's distance

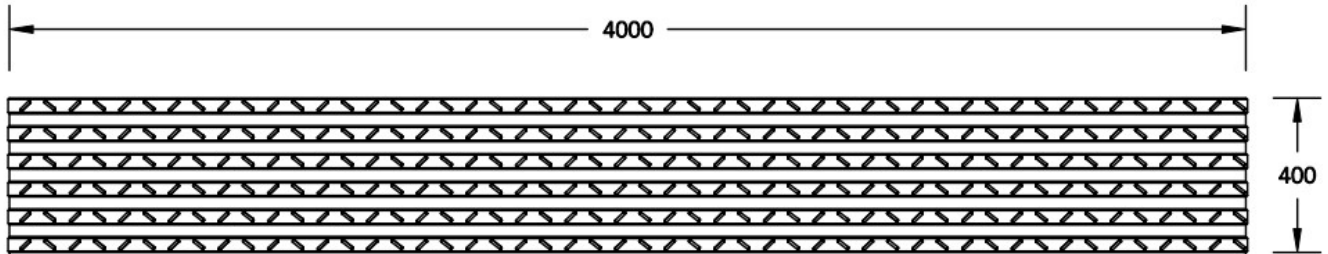
● **MEGA WALKWAY BOLT KIT**



Material : SUS304

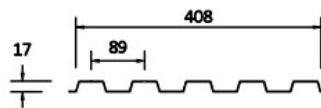


DIMENSION



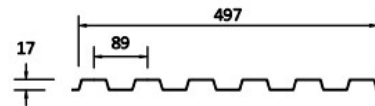
Top view

Scale - N/A



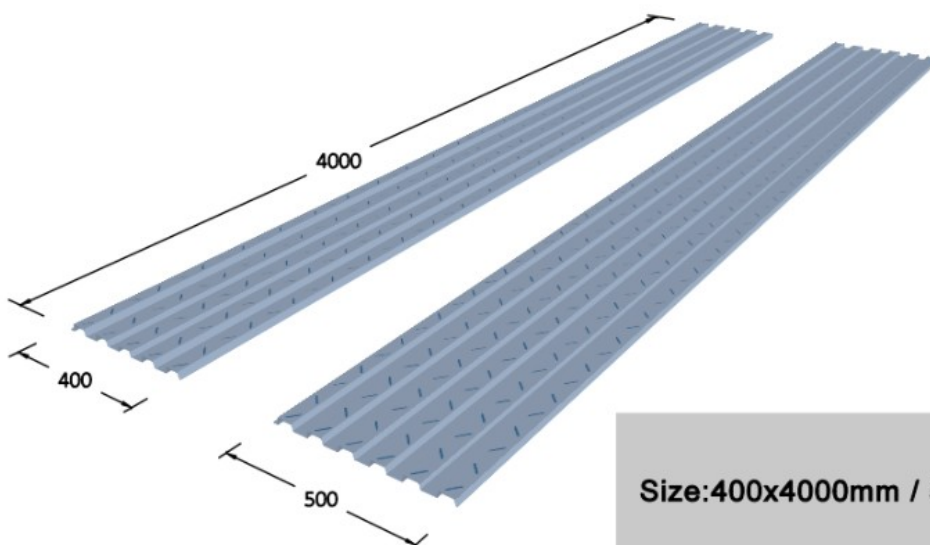
Section view Size 400 x 4000 mm

Scale - N/A



Section view Size 500 x 4000 mm






Scale - N/A



Size:400x4000mm / 500x4000mm Thickness :1mm

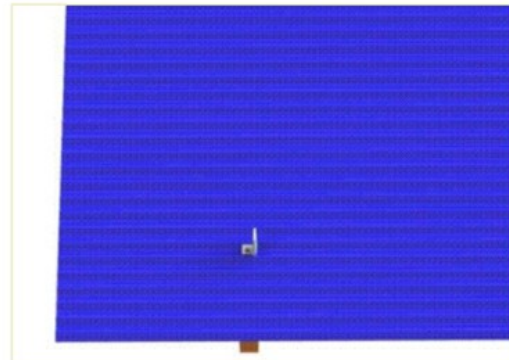
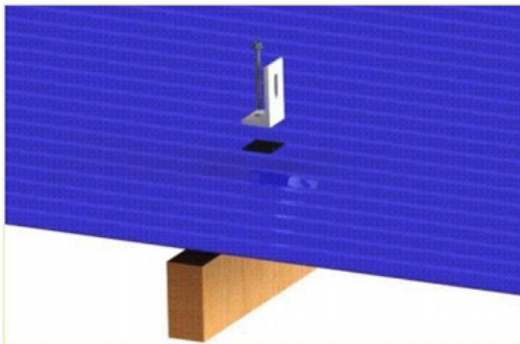
● INSTALLATION MANUAL FOR WALKWAY

Step1 : We must know the components list.

Rail	L-Foot	Walkway	ST6. 3*60	Nuts
				

Step2 : Installing screw with L-Foot on metal roof.

1. We need to confirm the mounting point and align the holes of the L foot to the mounting point.
2. Using a drill, drive the screws into the tin roof.

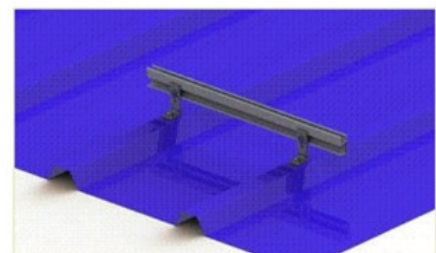


We can fix the mounting rail at any side of L-foot kit according to the actual condition
Rotate the back waterproof gasket around the bolts on the tile surface, and seal with glass glue

Step3 : Step 3: Installing Rail by the side of L-foot kit as bellow :

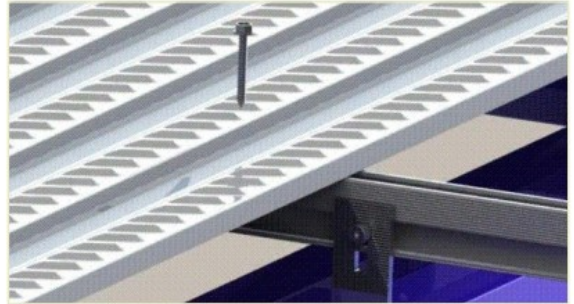
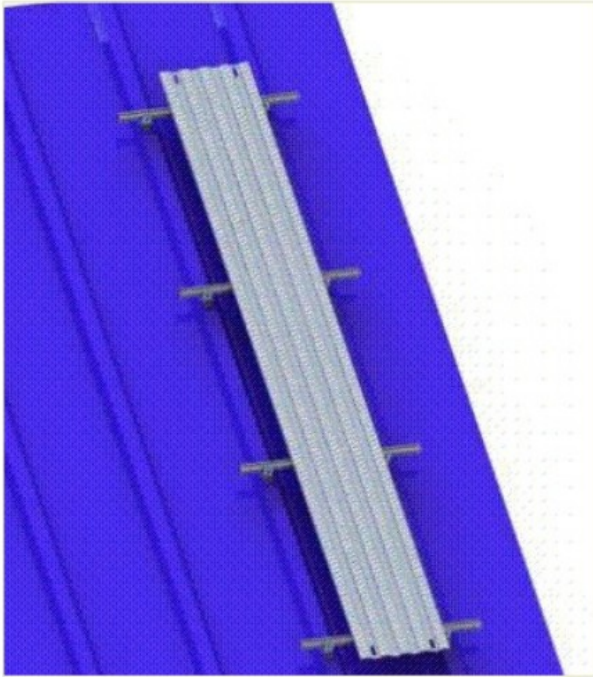
When we installed L-foot, and we can fix the rail at any side of L-foot kit according to the actual condition We use M8*25 inner-hexagonal socket bolt (contain 1 flat,1 spring,1 aluminum nut) to fix.
The space between each 2 rails should be between 1~1.3m.

L-Foot kit M8x25mm
Torque 14-16 N.m



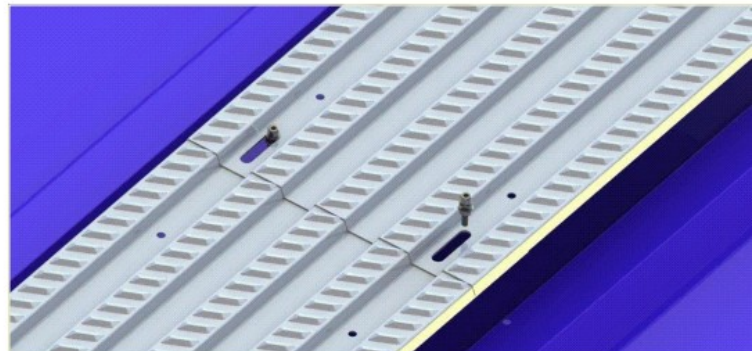
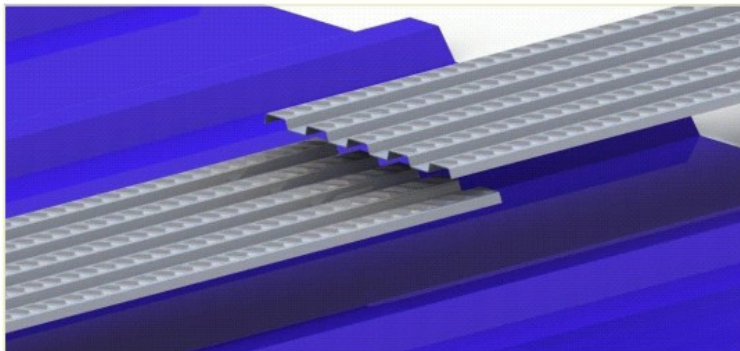
Step 4 :Putting walkway on the rail, drilling through both walkway and rail with ST6.3*60 screw.

After walkway is settled, locate the position of rail. We can use 6.3*60 steel screw to connect walkway and rail.



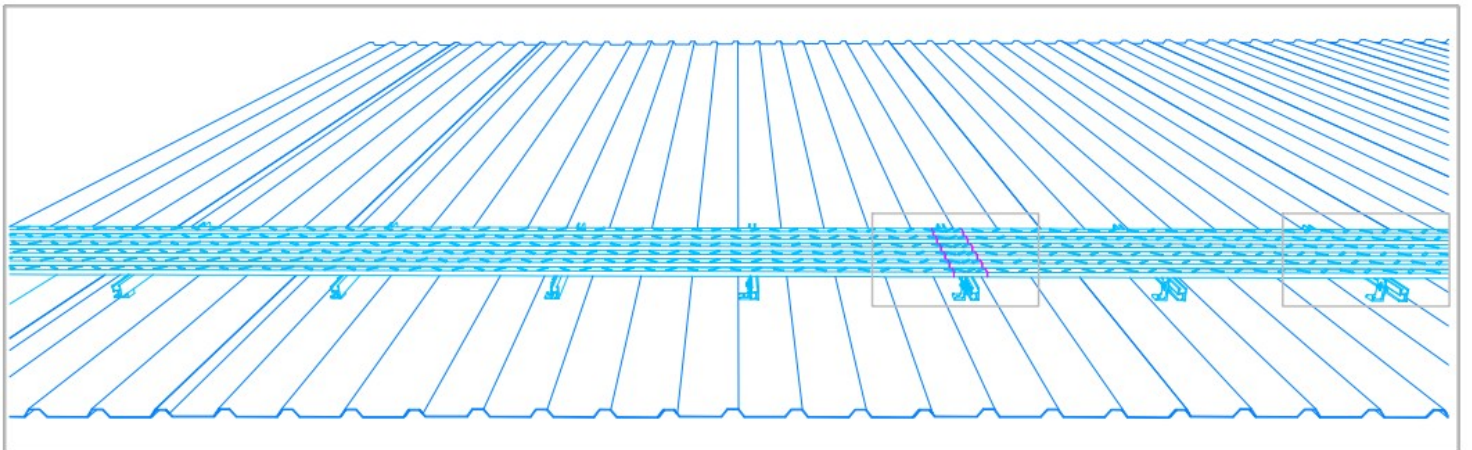
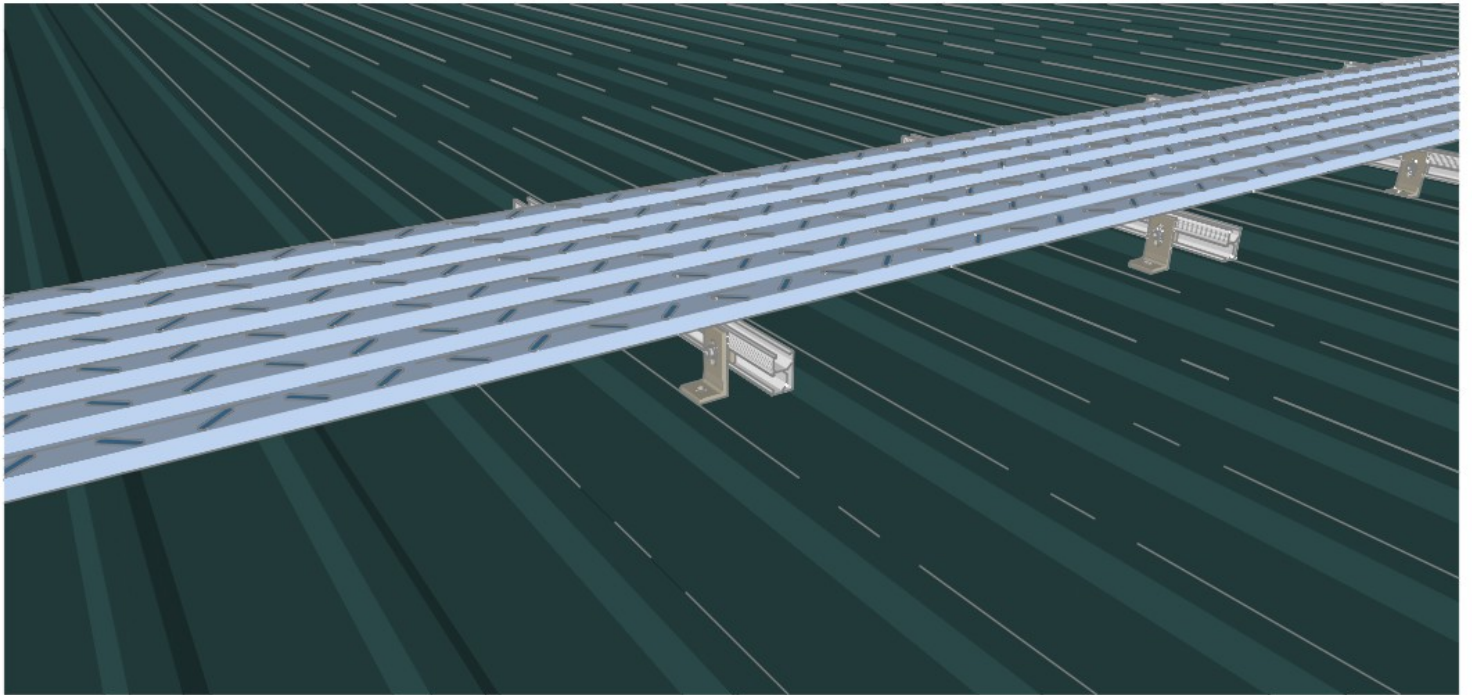
Step 5:Connection between two walkways.

If the walkway is shorter than expected, we can superpose the end of one walkway onto the end of settled walkway. Then, we can use nuts to fasten these two walkway.

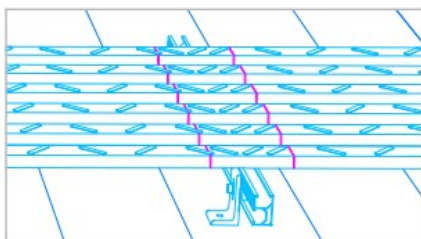


Make sure all parts fixed steady. The connection points between the panels must be supported by rails with a spacing of 10-20 cm.

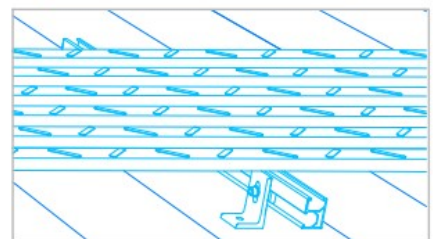
● LOAD BEARING



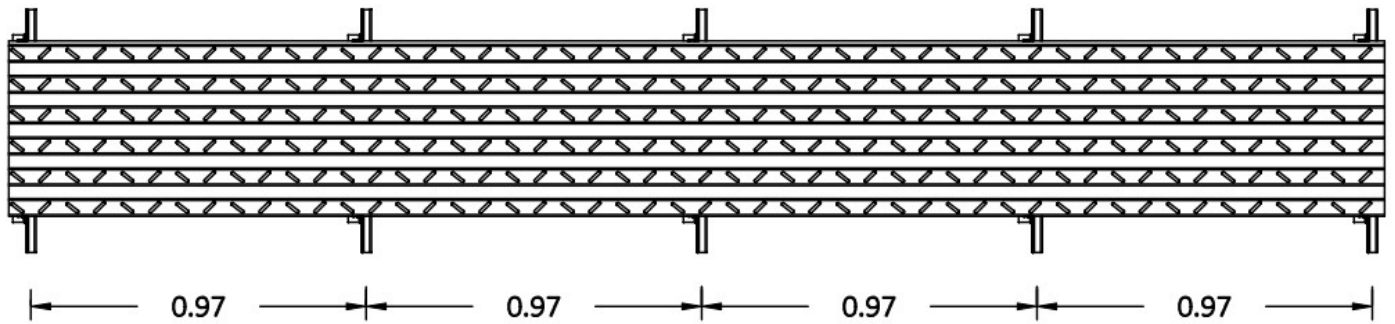
The connection points between the panels must be supported by rails with a spacing of 10-20 cm.



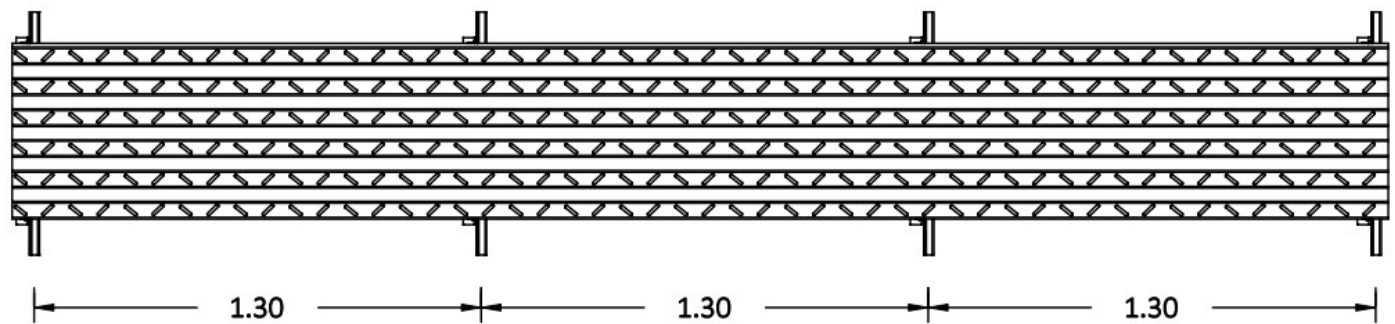
L-Foot kit M8x25mm
Torque 14-16 N.m



● DISTANCE



Methode 1



Methode 2

We can install in 2 formats within 4m: 5 support and 4 support.
End.