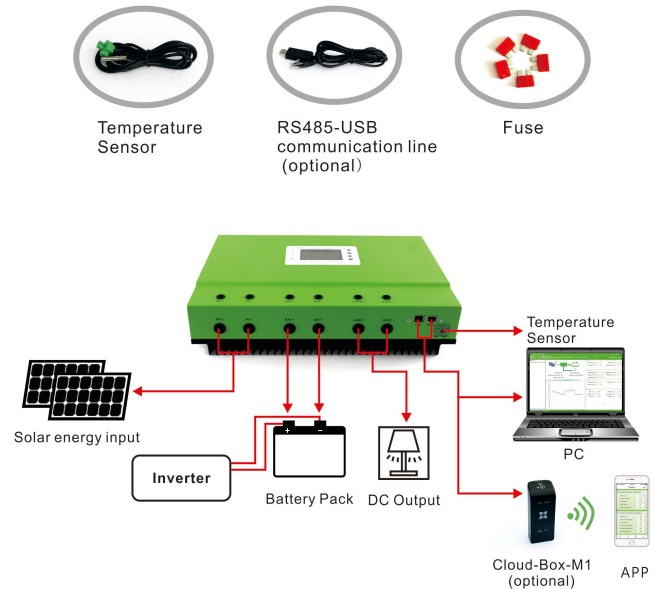
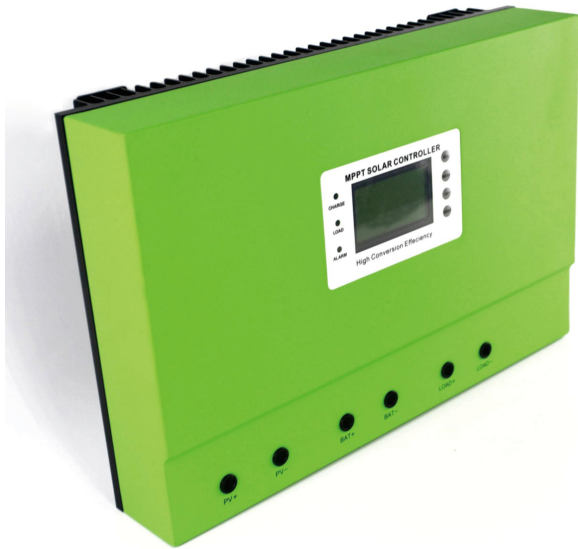


# MPPT Solar Charge Controller



Product color and some functions can be customized(OEM/ODM)

## Features

- ◆ It has an efficient MPPT algorithm, MPPT efficiency  $\geq 99.5\%$ , and converter efficiency up to 98%.
- ◆ Charge mode: three stages (constant current, constant voltage, floating charge), it prolongs service life of the batteries.
- ◆ Four types of load mode selection: ON/OFF, PV voltage control, Dual Time control, PV+Time control .
- ◆ Battery system voltage automatic recognition.
- ◆ Three kinds of commonly used lead-acid battery (Seal\Gel\Flooded) parameter settings fcan be selected by the user, and the user can also customize the parameters for other battery charging.
- ◆ It has a current limiting charging function. When the power of PV is too large, the controller automatically keeps the charging power, and the charging current will not exceed the rated value.
- ◆ Support multi - machine parallel to realize system power upgrade.
- ◆ High definition LCD display function to check the device running data and working status, also can support modify the controller display parameter.
- ◆ RS485 communication, we can offer communication protocol to convenient user's integrated management and secondary development.
- ◆ Support PC software monitoring and WiFi module to realize APP cloud monitoring.
- ◆ CE, RoHS, FCC certifications approved, we can assist clients to pass various certifications.
- ◆ 3 years warranty, and 3~10 years extended warranty service also can be provided.

## Parameter

Master series		Master-48BL-80A	Master-48BL-100A	Master-48BH-80A	Master-96BH-50A	
Product category	Controller Properties	MPPT (maximum power point tracking)				
	MPPT efficiency	≥99.5%				
	System voltage	Automatic recognition		48V	96V	
	Heat-dissipating method	Air cooling				
Input Characteristics	Max.PV input voltage(VOC)	DC150V		DC300V		
	Start the charge voltage point	Battery voltage + 3V		Battery voltage + 10V		
	Low input voltage protection point	Battery voltage + 2V		Battery voltage + 5V		
	Over voltage protection point	DC150V		DC300V		
	Rated PV power	12V system	1040W	1300W	—	—
		24V system	2080W	2600W	—	—
		36V system	3120W	3900W	—	—
48V system		4160W	5200W	4160W	—	
96V system		—	—	—	5200W	
Charge Characteristics	Selectable Battery Types (Default Gel battery)	Sealed lead acid, Gel battery, Flooded (Other types of the batteries also can be defined)				
	Charge rated current	80A	100A	80A	50A	
	Charge Method	3-Stage: constant current(fast charging)-constant voltage-floating charge				
LOAD Characteristics	Load voltage	The same as the battery voltage				
	Load rated current	80A	100A	80A	50A	
	Load control mode	On\Off mode, PV voltage control mode, Dual-time control mode, PV + Time control mode				
Display & Communication	Display mode	LCD (128*64 dots) &backlight				
	Communication mode	8-pin RJ45 port/RS485/support PC software monitoring/ support WiFi module to realize APP cloud monitoring				
Other Parameters	Protect function	Input-output over \ under voltage protection, Prevention of connection reverse protection etc.				
	Operation Temperature	-20℃~+50℃				
	Storage Temperature	-40℃~+75℃				
	IP(Ingress protection)	IP43				
	Max. connection size	50mm <sup>2</sup>				
	Net Weight (kg)	7.1				
	Gross Weight (kg)	8.8				
	Product Size (mm)	420*280*95				
Packing Size(mm)	510*368*210					