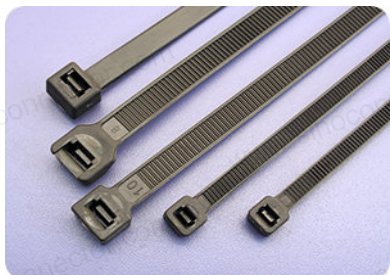


Self-locking Cable Ties (General Purpose)



	RAL5012
	RAL1016
	RAL2004
	RAL6018
	RAL1028
	RAL4006
	RAL9005
	RAL7035

Material

- UL-approved Polyamide 6.6 (Nylon 6.6), 94V-2 (low smoke, halogen free, UV rated)
- Available in gray (GR), black (BK), other special colors are also available on request

Structure

- Self-locking type with locking head & tie body

Operation temperature

- 40°C~+ 85°C (-40°F~+185°F). Recommended use temperature: -20°C to +85°C

Features

- Indoor and outdoor applications
- Self-locking design, fast and easy to install
- Resistant to bases, oils, greases, chloride solvents, limited resistant to acids
- One-piece locking wedge for consistent performance and reliability, low thread force and high loop tensile strength
- Curved tip is easy to pick up from flat surfaces and allows faster initial threading to speed installation
- Less insertion and pull through force
- Insulation, anti-aging, resistance to heat & chemical
- Hot runner injection molds and technology ensure higher and more stable quality of cable ties

How to use

Firstly bundle up the cables, wires or other things by self-locking cable tie, then Insert the tie tail through the locking pawl inside the head, finally clamp the tie band by hand or tool to lightly pull out, it can tie things up tightly.

Packing

- (A) Normal packing: Packed in polybag with neutral label + export carton
- (B) Special packing:
 - Colorful printing polybag + export carton
 - Colorful inner box + export carton
 - OEM label, inner box, blister, etc.

Description

A cable tie (also known as a wire tie, hose tie, zip tie, zap strap or tie wrap) is a kind of fastener mainly used for holding items together (primarily electrical cables or wires) and keep away from any kind of damage. It has a tie body section with a triangular teeth and a flexible pawl. Because of their low cost and ease of use, such cable ties are ubiquitous, finding use in a wide range of other applications.

Applications

Widely used in countless areas:

- Agricultural
- Industrial
- Automotive
- Electrical and electronic
- Heavy equipment
- Mining and railroad
- Fire and safety
- Packaging
- Telecommunications
- Food and beverage processing
- Marine and aerospace
- Lighting and machinery
- Pharmaceutical
- Material handling
- Construction & building automation

Conforms to

- CE (EN62275: 2015/EN50146: 2000)
- ROHS (Restriction of Hazardous Substances Directive) 2011/65/EU Annex II, 2002/95/EC
- REACH SVHC (67/548/EEC and Regulation No.1907/2006)

Notes

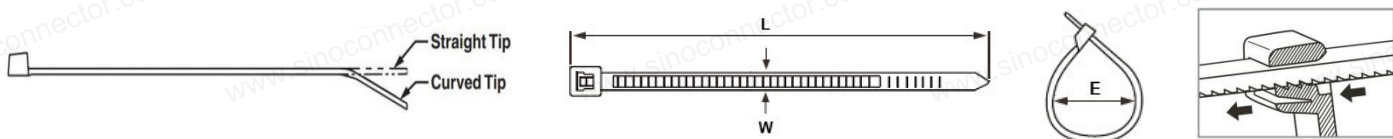
- Cable Ties have the property of absorbing moisture, don't open the package before use to avoid affecting its tensile strength and rigidity.
- The force used shouldn't exceed the limit of tensile strength of cable ties in operation.
- The objects which are bound can't have sharp edge or sharp point.
- The diameter of objects should within the maximum bundle diameter of cable ties, but remain not smaller than 100mm.
- Cable ties can be tightened by hand or by cable tie gun, please adjust the strength of tie gun according to the width, thickness and sizes of cable ties.



Self-locking Cable Ties (General Purpose)



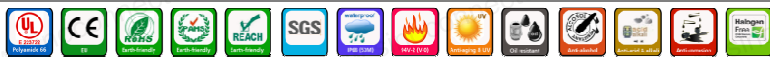
Diagram



Technical data

Item No.	Length (L)		Width (W)	Thickness	Max. Bundle Diameter (E)	Min. Tensile Strength		Packing (pcs/bag)
	(mm)	(inch)				(lbs)	(kgs)	
CT-3x60	60	2.36"	2.5	1.00	11	18	8	100 / 1000
CT-3x80	80	3.15"	2.5	1.00	15			
CT-3x100	100	3.94"	2.5	1.00	22			
CT-3x120	120	4.72"	2.5	1.00	28			
CT-3x150	150	5.91"	2.5	1.00	35			
CT-3x165	165	6.50"	2.5	1.00	40			
CT-3x180	180	7.09"	2.5	1.00	42			
CT-3x200	200	7.87"	2.5	1.00	50			
CT-4x100	100	3.94"	3.6	1.30	22			
CT-4x120	120	4.72"	3.6	1.30	28			
CT-4x150	150	5.91"	3.6	1.30	35			
CT-4x180	180	7.09"	3.6	1.30	42			
CT-4x200	200	7.87"	3.6	1.30	50			
CT-4x250	250	9.84"	3.6	1.30	65			
CT-4x280	280	11.02"	3.6	1.30	70			
CT-4x300	300	11.81"	3.6	1.30	82			
CT-4x350	350	13.78"	3.6	1.30	90			
CT-4x370	370	14.57"	3.6	1.30	98			
CT-4x400	400	15.75"	3.6	1.30	105			
CT-5x150	150	5.91"	4.8	1.50	35			
CT-5x180	180	7.09"	4.8	1.50	42			
CT-5x200	200	7.87"	4.8	1.50	50			
CT-5x250	250	9.84"	4.8	1.50	65			
CT-5x280	280	11.02"	4.8	1.50	70			
CT-5x300	300	11.81"	4.8	1.50	82			
CT-5x350	350	13.78"	4.8	1.50	90			
CT-5x370	370	14.57"4	4.8	1.50	98			
CT-5x380	380	14.96"	4.8	1.50	102			
CT-5x400	400	15.75"	4.8	1.50	105			
CT-5x430	430	16.93"	4.8	1.50	120			
CT-5x450	450	17.72"	4.8	1.50	125			
CT-5x500	500	19.69"	4.8	1.50	145			
CT-5x550	550	21.65"	4.8	1.50	160			
CT-5x650	650	25.59"	4.8	1.50	185			
CT-8x250	250	9.84"	7.6	1.60	65			
CT-8x300	300	11.81"	7.6	1.60	82			
CT-8x350	350	13.78"	7.6	1.60	90			
CT-8x380	380	14.96"	7.6	1.60	98			
CT-8x400	400	15.75"	7.6	1.60	105			
CT-8x450	450	17.72"	7.6	1.60	118			
CT-8x500	500	19.69"	7.6	1.60	150			
CT-8x600	600	23.62"	7.6	1.60	170			
CT-8x650	650	25.59"	7.6	1.60	185			
CT-9x180	180	7.09"	9.0	1.90	42			
CT-9x200	200	7.87"	9.0	1.90	50			
CT-9x360	360	14.17"	9.0	1.90	95			
CT-9x400	400	15.75"	9.0	1.90	105			
CT-9x450	450	17.72"	9.0	1.90	118			
CT-9x500	500	19.69"	9.0	1.90	150			
CT-9x550	550	21.65"	9.0	1.90	160			
CT-9x600	600	23.62"	9.0	1.90	170			
CT-9x650	650	25.59"	9.0	1.90	185			
CT-9x700	700	27.56"	9.0	1.90	190			
CT-9x750	750	29.53"	9.0	1.90	200			
CT-9x760	760	29.92"	9.0	1.90	225			
CT-9x800	800	31.50"	9.0	1.90	230			
CT-9x850	850	33.46"	9.0	1.90	240			
CT-9x900	900	35.43"	9.0	1.90	260			
CT-9x1000	1000	39.37"	9.0	1.90	298			
CT-9x1100	1100	43.31"	9.0	1.90	335			
CT-9x1200	1200	47.24"	9.0	1.90	340			
CT-12x650	650	25.59"	12	2.20	190	250	114	100
CT-12x760	760	29.92"	12	2.20	290			

Releasable Cable Ties (General Purpose)



- RAL5012
- RAL1016
- RAL2004
- RAL6018
- RAL1028
- RAL4006
- RAL9005
- RAL7035

Material

- UL-approved Polyamide 6.6 (nylon 6.6), 94V-2 (contact us for 94V-0 material)
- Available in gray (GR), black (BK), other special colors are also available on request

Structure

- Self-locking type w/ release-button head & tie body

Operation temperature

- -40°C~+ 85°C (-40°F~+185°F). Recommended use temperature: -20°C to +85°C

Features

- Reusable design, cost savings and waste reduction
- Self-locking, one-piece, fast and easy to install
- Resistance to bases, oils, greases, chloride solvents, limited resistance to acids
- Smooth, rounded edges do not cut insulation or hands, comfortable to use
- Closely spaced positive-locking teeth allow the zip ties to be finely adjusted to fit cable bundles of all sizes
- Head and pawl are integrally molded for added strength and durability
- V-shaped raised ridges on bent tip give a sure grip and easy pull-up
- Rounded tip for easier pickup, insertion and pull-up

How to use

Firstly bundle up the cables, wires or other things by reusable cable tie, then Insert the tie tail through the locking pawl inside the head, finally clamp the tie band by hand or by tool to lightly pull out, it can tighten them up.

Packing

- (A) Normal packing: Packed in polybag with neutral label + export carton
- (B) Special packing also available upon request

Technical data

Item No.	Length (L)		Width (W) (mm)	Max. Bundle Diameter (mm)	Min. Tensile Strength		Packing (pcs/bag)
	(mm)	(inch)			(lbs)	(kgs)	
RCT-5x200	200	7.87"	5.0	50	50	22	100
RCT-8x150	150	5.91"	7.6	35			
RCT-8x200	200	7.87"	7.6	50			
RCT-8x250	250	9.84"	7.6	65			

Description

A releasable cable tie (also known as a reusable cable tie, reusable zip tie or releasable zip tie) is a kind of fastener used for holding items together (primarily electrical cables or wires) and keep away from any kind of damage. It has a tie body section with a locking teeth and a flexible pawl. Because of their low cost and ease of use, such cable ties are ubiquitous, finding use in a wide range of other applications.

Applications

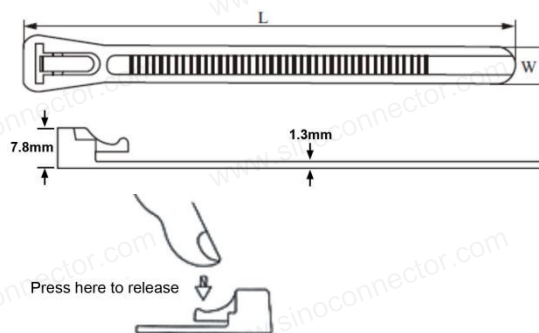
Widely used in countless areas:

- Agricultural
- Industrial
- Automotive
- Electrical and electronic
- Heavy equipment
- Mining and railroad
- Fire and safety
- Packaging
- Telecommunications
- Food and beverage processing
- Marine and aerospace
- Lighting and machinery
- Pharmaceutical
- Material handling
- Construction & building automation

Conforms to

- CE (EN62275: 2015/EN50146: 2000)
- ROHS (Restriction of Hazardous Substances Directive) 2011/65/EU Annex II, 2002/95/EC
- REACH SVHC (67/548/EEC and Regulation No.1907/2006)

Diagram



Double-locking Cable Ties (General Purpose)



- RAL5012
- RAL1016
- RAL2004
- RAL6018
- RAL1028
- RAL4006
- RAL9005
- RAL7035

Material

- UL-approved Polyamide 6.6 (nylon 6.6), 94V-2 (contact us for 94V-0 material)
- Available in gray (GR), black (BK), other special colors are also available on request

Structure

- Dual-locking type with locking head & tie body

Operation temperature

- -40°C~+ 85°C (-40°F~+185°F). Recommended use temperature: -20°C to +85°C

Features

- Secures cable and wires firmly without slipping
- Dual-locking head design, high tensile strength
- Resistance to bases, oils, greases, chloride solvents, limited resistance to acids
- Smooth, rounded edges do not cut insulation or hands, comfortable to use
- Serrations on the outer side of the tie eliminates the risk of damage to the cable
- Head and pawl are integrally molded for added strength and durability
- Ideal for hazardous environments, low temperatures and humidity
- Rounded tail tip for easier insertion and pull-out

How to use

Firstly bundle up the cables, wires or other things by double locking cable tie, then Insert the tie tail through the dual-locking pawl inside the head, clamp the tie body by hand or by tool to pull out, it can tighten them up.

Packing

- (A) Normal packing: Packed in polybag with neutral label + export carton
- (B) Special packing also available upon request

Technical data

Item No.	Length (L)		Width (W)	Max. Bundle Diameter	Min. Tensile Strength		Packing (pcs/bag)
	(mm)	(inch)			(lbs)	(kgs)	
DLCT-9x180	180	7.09"	9.0	45	70	35	100
DLCT-9x260	260	10.24"	9.0	78	110	50	
DLCT-9x360	360	14.17"	9.0	100	110	50	

Description

A double locking cable tie (also known as a double locking zip tie, dual-locking cable tie) is a kind of fastener used for holding items together (primarily electrical cables or wires) and keep away from damage. It has a tie body section with dual-locking teeth in the head and a flexible pawl. Because of their low cost and ease of use, such cable ties are ubiquitous, finding use in a wide range of other applications.

Applications

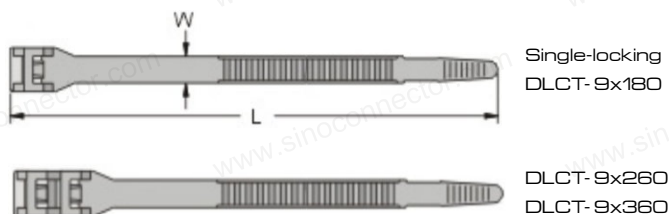
Widely used in countless areas:

- Agricultural
- Industrial
- Automotive
- Electrical and electronic
- Heavy equipment
- Mining and railroad
- Fire and safety
- Packaging
- Telecommunications
- Food and beverage processing
- Marine and aerospace
- Lighting and machinery
- Pharmaceutical
- Material handling
- Construction & building automation

Conforms to

- CE (EN62275: 2015/EN50146: 2000)
- ROHS (Restriction of Hazardous Substances Directive) 2011/65/EU Annex II, 2002/95/EC
- REACH SVHC (67/548/EEC and Regulation No.1907/2006)

Diagram



New Double-locking Cable Ties (General Purpose)



- RAL5012
- RAL1016
- RAL2004
- RAL6018
- RAL1028
- RAL4006
- RAL9005
- RAL7035

Material

- UL-approved Polyamide 6.6 (nylon 6.6), 94V-2 (contact us for 94V-0 material)
- Available in gray (GR), black (BK), other special colors are also available on request

Structure

- Dual-locking type with locking head & tie body

Operation temperature

- -40°C~+ 85°C (-40°F~+185°F). Recommended use temperature: -20°C to +85°C

Features

- Secures cable and wires firmly without slipping
- Dual-locking head design, high tensile strength
- Resistance to bases, oils, greases, chloride solvents, limited resistance to acids
- Smooth, rounded edges do not cut insulation or hands, comfortable to use
- Serrations on the outer side of the tie eliminates the risk of damage to the cable
- Head and pawl are integrally molded for added strength and durability
- Ideal for hazardous environments, low temperatures and humidity
- Rounded tail tip for easier insertion and pull-out

How to use

Firstly bundle up the cables, wires or other things by double locking cable tie, then Insert the tie tail through the dual-locking pawl inside the head, clamp the tie body by hand or by tool to pull out, it can tighten them up.

Packing

- (A) Normal packing: Packed in polybag with neutral label + export carton
- (B) Special packing also available upon request

Technical data

Item No.	Length (L)		Width (W) (mm)	Max. Bundle Diameter (mm)	Min. Tensile Strength		Packing (pcs/bag)
	(mm)	(inch)			(lbs)	(kgs)	
NDLCT-9x180	180	7.09"	9.0	45	70	35	100
NDLCT-9x260	260	10.24"	9.0	78	110	50	
NDLCT-9x360	360	14.17"	9.0	100	110	50	

Description

A new double locking cable tie (also known as a double locking zip tie, dual-locking cable tie) is a kind of fastener used for holding items together (primarily electrical cables or wires) and keep away from damage. It has a tie body section with dual-locking teeth in the head and a flexible pawl. Because of their low cost and ease of use, such cable ties are ubiquitous, finding use in a wide range of other applications.

Applications

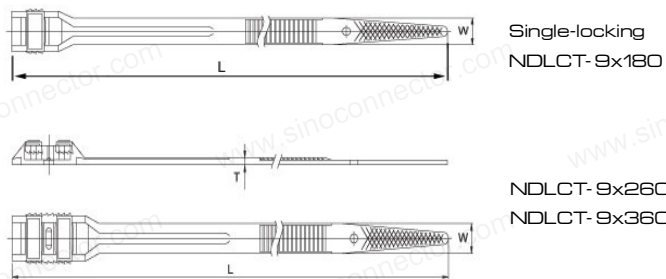
Widely used in countless areas:

- Agricultural
- Industrial
- Automotive
- Electrical and electronic
- Heavy equipment
- Mining and railroad
- Fire and safety
- Packaging
- Telecommunications
- Food and beverage processing
- Marine and aerospace
- Lighting and machinery
- Pharmaceutical
- Material handling
- Construction & building automation

Conforms to

- CE (EN62275: 2015/EN50146: 2000)
- ROHS (Restriction of Hazardous Substances Directive) 2011/65/EU Annex II, 2002/95/EC
- REACH SVHC (67/548/EEC and Regulation No.1907/2006)

Diagram



Mounted Head Cable Ties (General Purpose)



- RAL5012
- RAL1016
- RAL2004
- RAL6018
- RAL1028
- RAL4006
- RAL9005
- RAL7035

Description

A mounted head cable tie (also known as a mounted head zip tie, cable tie with mounting hole) is a kind of fastener used for holding items together (primarily electrical cables or wires) and keep away from damage. It has a tie body section with self-locking teeth and a round mounting hole in the head. Because of their low cost and ease of use, such cable ties are ubiquitous, finding use in a wide range of other applications.

Applications

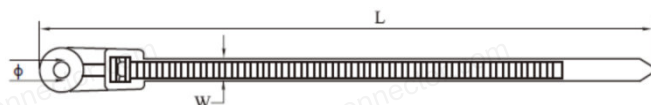
Widely used in countless areas:

- Agricultural
- Industrial
- Automotive
- Electrical and electronic
- Heavy equipment
- Mining and railroad
- Fire and safety
- Packaging
- Telecommunications
- Food and beverage processing
- Marine and aerospace
- Lighting and machinery
- Pharmaceutical
- Material handling
- Construction & building automation

Conforms to

- CE (EN62275: 2015/EN50146: 2000)
- ROHS (Restriction of Hazardous Substances Directive) 2011/65/EU Annex II, 2002/95/EC
- REACH SVHC (67/548/EEC and Regulation No.1907/2006)

Diagram



Material

- UL-approved Polyamide 6.6 (nylon 6.6), 94V-2 (contact us for 94V-0 material)
- Available in gray (GR), black (BK), other special colors are also available on request

Structure

- Self-locking w/ locking head, tie body & mounting hole

Operation temperature

- -40°C~+ 85°C (-40°F~+185°F). Recommended use temperature: -20°C to +85°C

Features

- For indoor use
- Secure a cable bundle to another surface such as a control panel, communication rack, wall or ceiling
- Design allows for bundling before or after screwing clamp in place
- One-piece construction for consistent performance and reliability
- Allow for a quick and easy bundle/mount solution
- Smooth and rounded edges do not cut insulation or hands and are easy to use
- Resistance to bases, oils, greases, chloride solvents, limited resistance to acids
- Sharp tail tip for easier insertion and pull-out

How to use

Firstly bundle up the cables, wires or other objects by mounted head cable tie, then Insert the tie tail through the self-locking pawl inside the head, clamp the tie body by hand or by tool to pull out to tighten them up, finally mount to surface with screw to support heavy things.

Packing

- Normal packing: Packed in polybag with neutral label

Technical data

Item No.	Length (L)		Width (W) (mm)	Max. Bundle Diameter (mm)	Hole Size (Ø) (mm)	Min. Tensile Strength		Packing (pcs/bag)
	(mm)	(inch)				(lbs)	(kgs)	
MHCT-4x150	150	5.91"	3.6	32	4.5	40	18	100
MHCT-4x200	200	7.87"	3.6	42	5.5	50	22	





**AISI304
AISI316
AISI316L**

Material

- Grade 304, 316 or 316L non-magnetic stainless steel (also available in grade 201 material)
- Color: Metallic silver

Structure

- Self-locking design with ball bearing head & band

Operation temperature

- -80°C~+538°C (-112°F~+1000°F)

Features

- Used in a wide range of indoor, outdoor, and underground uses
- Stainless steel cable ties have higher strength and better durability than nylon cable ties
- Low profile, self-locking, ball bearing head mechanism with fully adjustable strap provides quick and easy installation using hand tools
- Provides a stronger, safer method of cable bundling
- Fully enclosed head does not allow dirt or grit to interfere with locking mechanism
- Smooth surfaces and rounded edges assures cable protection and worker safety
- Absolutely fireproof, Halogen free, UV-resistant, extra resistant to corrosion & decay, long service life

How to use

Firstly bundle up the cables, wires or other objects by stainless steel cable tie, then Insert the band tail through the buckle, when the proper tension is reached, the internal locking ball won't roll freely, the tie is fully tightened, then cut off the tail by crimping tool.

Packing

- (A) Normal packing: Packed in polybag with neutral label + export carton
- (B) Special packing:
 - (1) Colorful printing polybag + export carton
 - (2) Colorful inner box + export carton
 - (3) OEM label, inner box, blister, etc.

Description

A 304, 316 or 316L stainless steel cable tie (also known as a metal ball tie, a stainless steel zip tie or wire tie) is a kind of fastener used for holding items together (primarily electrical cables, wires or pipes) and keep away from damage. It has a band section with a locking ball in the buckle. Due to its higher tensile, durability and long service life, such cable ties are ubiquitous, finding use in a wide range of other applications.

Applications

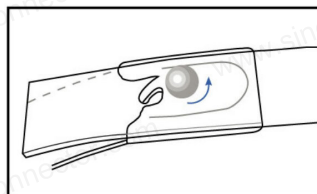
Mainly useful in applications where corrosion, vibration, general weathering, radiation, extreme temperature and hazardous areas:

- Shipbuilding
- Automotive
- Nuclear power
- Aerospace
- Construction
- Interurban locomotive
- Telecommunications
- Food and beverage processing
- Marine
- Machinery
- Solar equipment
- Mining and railroad
- Petroleum and chemical industry
- General industry
- Fire protection
- Offshore facilities

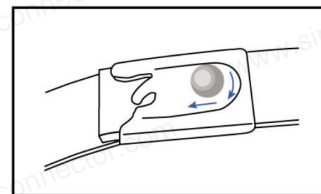
Conforms to

- CE (EN50262: 1998 + A2: 2004)
- ROHS (Restriction of Hazardous Substances Directive) 2011/65/EU Annex II, 2002/95/EC
- REACH SVHC (67/548/EEC and Regulation No. 1907/2006)

How locking ball works



Insert the tail into the buckle. Before the tie is tightened, the internal locking ball still rolls freely.



Once the proper tension is reached, use cable tie tool to cut off the tail. The ball then wedges into the buckle, locking it tightly against both the top and bottom of the band.





Diagram



Technical data

Item No.	Length (L)		Width (W)		Thickness (mm)	Max. Bundle Diameter		Min. Tensile Strength		Packing (pcs)						
	(mm)	(inch)	(mm)	(inch)		(mm)	(inch)	(lbs)	(N)							
SSCT-5x100	100	3.94"	4.6	0.18"	0.25	22	0.87"	202~292	900~1300	100						
SSCT-5x150	150	5.91"				35	1.38"									
SSCT-5x200	200	7.87"				50	1.97"									
SSCT-5x250	250	9.84"				65	2.56"									
SSCT-5x300	300	11.81"				82	3.23"									
SSCT-5x350	350	13.78"				90	3.54"									
SSCT-5x400	400	15.75"				105	4.14"									
SSCT-5x450	450	17.72"				130	5.12"									
SSCT-5x500	500	19.69"				140	5.51"									
SSCT-5x550	550	21.65"				162	6.38"									
SSCT-5x600	600	23.62"				185	7.28"									
SSCT-5x700	700	27.56"				205	8.07"									
SSCT-5x750	750	29.53"				223	8.78"									
SSCT-5x800	800	31.50"				235	9.25"									
SSCT-5x850	850	33.46"				250	9.84"									
SSCT-5x900	900	35.43"				260	10.24"									
SSCT-5x950	950	37.40"				272	10.71"									
SSCT-5x1000	1000	39.37"				290	11.42"									
SSCT-8x150	150	5.91"				7.9	0.31"				0.25	35	1.38"	405~495	1800~2200	100
SSCT-8x200	200	7.87"										50	1.97"			
SSCT-8x250	250	9.84"	65	2.56"												
SSCT-8x300	300	11.81"	82	3.23"												
SSCT-8x350	350	13.78"	90	3.54"												
SSCT-8x400	400	15.75"	105	4.14"												
SSCT-8x450	450	17.72"	130	5.12"												
SSCT-8x500	500	19.69"	140	5.51"												
SSCT-8x550	550	21.65"	162	6.38"												
SSCT-8x600	600	23.62"	185	7.28"												
SSCT-8x700	700	27.56"	205	8.07"												
SSCT-8x750	750	29.53"	223	8.78"												
SSCT-8x800	800	31.50"	235	9.25"												
SSCT-8x850	850	33.46"	250	9.84"												
SSCT-8x900	900	35.43"	260	10.24"												
SSCT-8x950	950	37.40"	272	10.71"												
SSCT-8x1000	1000	39.37"	290	11.42"												
SSCT-10x150	150	5.91"	10	0.39"	0.25			35	1.37"	478~550		2100~2400	100			
SSCT-10x200	200	7.87"						50	1.97"							
SSCT-10x250	250	9.84"						65	2.56"							
SSCT-10x300	300	11.81"				82	3.23"									
SSCT-10x350	350	13.78"				90	3.54"									
SSCT-10x400	400	15.75"				105	4.14"									
SSCT-10x450	450	17.72"				130	5.12"									
SSCT-10x500	500	19.69"				140	5.51"									
SSCT-10x550	550	21.65"				162	6.38"									
SSCT-10x600	600	23.62"				185	7.28"									
SSCT-10x650	650	25.59"				196	7.72"									
SSCT-10x700	700	27.56"				205	8.07"									
SSCT-10x750	750	29.53"				223	8.78"									
SSCT-10x800	800	31.50"				235	9.25"									
SSCT-12x150	150	5.91"				12	0.47"	0.30	35		1.37"			562~652	2500~2900	100
SSCT-12x200	200	7.87"							50		1.97"					
SSCT-12x250	250	9.84"							65		2.56"					
SSCT-12x300	300	11.81"							82		3.23"					
SSCT-12x350	350	13.78"							90		3.54"					
SSCT-12x400	400	15.75"							105		4.14"					
SSCT-12x450	450	17.72"	130	5.12"												
SSCT-12x500	500	19.69"	140	5.51"												
SSCT-12x550	550	21.65"	162	6.38"												
SSCT-12x600	600	23.62"	185	7.28"												
SSCT-12x700	700	27.56"	205	8.07"												
SSCT-12x750	750	29.53"	223	8.78"												
SSCT-12x800	800	31.50"	235	9.25"												
SSCT-12x850	850	33.46"	250	9.84"												
SSCT-12x900	900	35.43"	260	10.24"												
SSCT-12x950	950	37.40"	272	10.71"												
SSCT-12x1000	1000	39.37"	290	11.42"												
SSCT-16x200	200	7.87"	16	0.63"	0.35				50	1.97"	720~809	3200~3600	50			
SSCT-16x250	250	9.84"							65	2.56"						
SSCT-16x300	300	11.81"							82	3.23"						
SSCT-16x350	350	13.78"				90	3.54"									
SSCT-16x400	400	15.75"				105	4.14"									
SSCT-16x450	450	17.72"				130	5.12"									
SSCT-16x500	500	19.69"				140	5.51"									
SSCT-16x600	600	23.62"				185	7.28"									
SSCT-16x700	700	27.56"				205	8.07"									
SSCT-16x800	800	31.50"				235	9.25"									
SSCT-16x900	900	35.43"				260	10.24"									
SSCT-16x1000	1000	39.37"				290	11.42"									



**AISI304
AISI316
AISI316L**

Material

- Grade 304, 316 or 316L non-magnetic stainless steel with polyester coating
- Color: Black band and stainless steel buckle

Structure

- Self-locking design with ball bearing head & band

Operation temperature

- -80°C~+150°C (-112°F~+302°F)

Features

- Used in a wide range of indoor, outdoor, and underground uses
- Superior corrosion resistance provides maximum performance and longer service life in harsh environments
- Metallic buckle helps to distinguish from black nylon cable tie
- Low profile, self-locking, ball bearing head mechanism with fully adjustable band provides quick and easy installation using hand tools
- Assures worker safety and bundle protection from abrasion during and after installation
- UV resistance, fire resistance, halogen free and non-toxic

How to use

Firstly bundle up the cables, wires or other objects by semi-coated stainless steel cable tie, then Insert the band tail through the buckle, when the proper tension is reached, the internal locking ball won't roll freely, the tie is fully tightened, then cut off the tail by crimping tool.

Packing

- (A) Normal packing: Packed in polybag with neutral label + export carton
- (B) Special packing:
 - (1) Colorful printing polybag + export carton
 - (2) Colorful inner box + export carton
 - (3) OEM label, inner box, blister, etc.

Description

A 304,316,316L semi-coated stainless steel cable tie (also known as a semi-coated stainless steel zip tie) is a kind of fastener used for holding items together (primarily electrical cables, wires or pipes) and keep away from damage. It has a band section with a locking ball in the buckle. Due to its high tensile, durability and long service life, such cable ties are ubiquitous, finding use in a wide range of other applications.

Applications

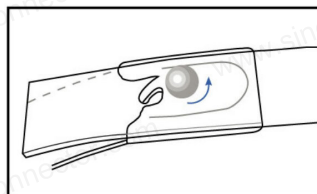
Mainly useful in applications where corrosion, vibration, general weathering, radiation, high temperature and hazardous areas:

- Shipbuilding
- Automotive
- Nuclear power
- Aerospace
- Construction
- Interurban locomotive
- Telecommunications
- Food and beverage processing
- Marine
- Machinery
- Solar equipment
- Mining and railroad
- Petroleum and chemical industry
- General industry
- Fire protection
- Offshore facilities

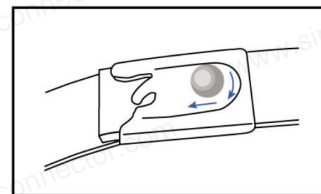
Conforms to

- CE (EN50262: 1998 + A2: 2004)
- ROHS (Restriction of Hazardous Substances Directive) 2011/65/EU Annex II, 2002/95/EC
- REACH SVHC (67/548/EEC and Regulation No.1907/2006)

How locking ball works



Insert the tail into the buckle. Before the tie is tightened, the internal locking ball still rolls freely.



Once the proper tension is reached, use cable tie tool to cut off the tail. The ball then wedges into the buckle, locking it tightly against both the top and bottom of the band.



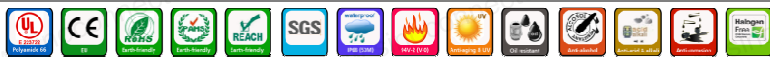


Diagram



Technical data

Item No.	Length (L)		Width (W)		Thickness (mm)	Max. Bundle Diameter		Min. Tensile Strength		Packing (pcs)						
	(mm)	(inch)	(mm)	(inch)		(mm)	(inch)	(lbs)	(N)							
SCCTB-5x100	100	3.94"	4.6	0.18"	0.30	22	0.87"	130~220	600~1000	100						
SCCTB-5x150	150	5.91"				35	1.38"									
SCCTB-5x200	200	7.87"				50	1.97"									
SCCTB-5x250	250	9.84"				65	2.56"									
SCCTB-5x300	300	11.81"				82	3.23"									
SCCTB-5x350	350	13.78"				90	3.54"									
SCCTB-5x400	400	15.75"				105	4.14"									
SCCTB-5x450	450	17.72"				130	5.12"									
SCCTB-5x500	500	19.69"				140	5.51"									
SCCTB-5x550	550	21.65"				162	6.38"									
SCCTB-5x600	600	23.62"				185	7.28"									
SCCTB-5x700	700	27.56"				205	8.07"									
SCCTB-5x750	750	29.53"				223	8.78"									
SCCTB-5x800	800	31.50"				235	9.25"									
SCCTB-5x850	850	33.46"				250	9.84"									
SCCTB-5x900	900	35.43"				260	10.24"									
SCCTB-5x950	950	37.40"				272	10.71"									
SCCTB-5x1000	1000	39.37"				290	11.42"									
SCCTB-8x150	150	5.91"				7.9	0.31"				0.30	35	1.38"	240~380	1100~1700	100
SCCTB-8x200	200	7.87"										50	1.97"			
SCCTB-8x250	250	9.84"	65	2.56"												
SCCTB-8x300	300	11.81"	82	3.23"												
SCCTB-8x350	350	13.78"	90	3.54"												
SCCTB-8x400	400	15.75"	105	4.14"												
SCCTB-8x450	450	17.72"	130	5.12"												
SCCTB-8x500	500	19.69"	140	5.51"												
SCCTB-8x550	550	21.65"	162	6.38"												
SCCTB-8x600	600	23.62"	185	7.28"												
SCCTB-8x700	700	27.56"	205	8.07"												
SCCTB-8x750	750	29.53"	223	8.78"												
SCCTB-8x800	800	31.50"	235	9.25"												
SCCTB-8x850	850	33.46"	250	9.84"												
SCCTB-8x900	900	35.43"	260	10.24"												
SCCTB-8x950	950	37.40"	272	10.71"												
SCCTB-8x1000	1000	39.37"	290	11.42"												
SCCTB-10x150	150	5.91"	10	0.39"	0.30			35	1.37"	260~400		1200~1800	100			
SCCTB-10x200	200	7.87"						50	1.97"							
SCCTB-10x250	250	9.84"						65	2.56"							
SCCTB-10x300	300	11.81"				82	3.23"									
SCCTB-10x350	350	13.78"				90	3.54"									
SCCTB-10x400	400	15.75"				105	4.14"									
SCCTB-10x450	450	17.72"				130	5.12"									
SCCTB-10x500	500	19.69"				140	5.51"									
SCCTB-10x550	550	21.65"				162	6.38"									
SCCTB-10x600	600	23.62"				185	7.28"									
SCCTB-10x650	650	25.59"				196	7.72"									
SCCTB-10x700	700	27.56"				205	8.07"									
SCCTB-10x750	750	29.53"				223	8.78"									
SCCTB-10x800	800	31.50"				235	9.25"									
SCCTB-12x150	150	5.91"				12	0.47"	0.35	35		1.37"			400~490	1800~2200	100
SCCTB-12x200	200	7.87"							50		1.97"					
SCCTB-12x250	250	9.84"							65		2.56"					
SCCTB-12x300	300	11.81"							82		3.23"					
SCCTB-12x350	350	13.78"							90		3.54"					
SCCTB-12x400	400	15.75"							105		4.14"					
SCCTB-12x450	450	17.72"	130	5.12"												
SCCTB-12x500	500	19.69"	140	5.51"												
SCCTB-12x550	550	21.65"	162	6.38"												
SCCTB-12x600	600	23.62"	185	7.28"												
SCCTB-12x700	700	27.56"	205	8.07"												
SCCTB-12x750	750	29.53"	223	8.78"												
SCCTB-12x800	800	31.50"	235	9.25"												
SCCTB-12x850	850	33.46"	250	9.84"												
SCCTB-12x900	900	35.43"	260	10.24"												
SCCTB-12x950	950	37.40"	272	10.71"												
SCCTB-12x1000	1000	39.37"	290	11.42"												
SCCTB-16x200	200	7.87"	16	0.63"	0.45				50	1.97"	440~550	2000~2500	50			
SCCTB-16x250	250	9.84"							65	2.56"						
SCCTB-16x300	300	11.81"							82	3.23"						
SCCTB-16x350	350	13.78"				90	3.54"									
SCCTB-16x400	400	15.75"				105	4.14"									
SCCTB-16x450	450	17.72"				130	5.12"									
SCCTB-16x500	500	19.69"				140	5.51"									
SCCTB-16x600	600	23.62"				185	7.28"									
SCCTB-16x700	700	27.56"				205	8.07"									
SCCTB-16x800	800	31.50"				235	9.25"									
SCCTB-16x900	900	35.43"				260	10.24"									
SCCTB-16x1000	1000	39.37"				290	11.42"									



**AISI304
AISI316
AISI316L**

Material

- Grade 304, 316 or 316L non-magnetic stainless steel with polyester coating
- Color: Black band and black buckle

Structure

- Self-locking design with ball locking head & band

Operation temperature

- -80°C~+150°C (-112°F~+302°F)

Features

- Used in a wide range of indoor, outdoor, and underground uses
- Superior corrosion resistance provides maximum performance and longer service life in harsh environments
- Prevents the corrosion between dissimilar materials
- Low profile, self-locking, ball bearing head mechanism with fully adjustable band provides quick and easy installation using hand tools
- Assures worker safety and bundle protection from abrasion during and after installation
- Provides additional edge protection of cable bundling
- UV resistance, fire resistance, halogen free and non-toxic

How to use

Firstly bundle up the cables, wires or other objects by fully coated stainless steel cable tie, then Insert the band tail through the buckle, when the proper tension is reached, the internal locking ball won't roll freely, the tie is fully tightened, then cut off the tail by crimping tool.

Packing

- (A) Normal packing: Packed in polybag with neutral label + export carton
- (B) Special packing:
 - (1) Colorful printing polybag + export carton
 - (2) Colorful inner box + export carton
 - (3) OEM label, inner box, blister, etc.

Description

A 304, 316, 316L fully coated stainless steel cable tie (also known as a fully coated stainless steel zip tie) is a kind of fastener used for holding items together (primarily electrical cables, wires or pipes) and keep away from damage. It has a band section with a locking ball in the buckle. Due to its high tensile, durability and long service life, such cable ties are ubiquitous, finding use in a wide variety of other applications.

Applications

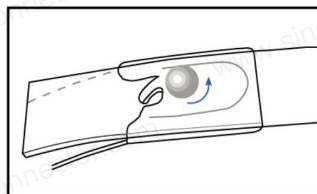
Mainly useful in applications where corrosion, vibration, general weathering, radiation, high temperature and hazardous areas:

- Shipbuilding
- Automotive
- Nuclear power
- Aerospace
- Construction
- Interurban locomotive
- Telecommunications
- Food and beverage processing
- Marine
- Machinery
- Solar equipment
- Mining and railroad
- Petroleum and chemical industry
- General industry
- Fire protection
- Offshore facilities

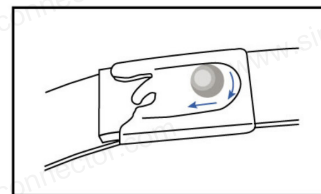
Conforms to

- CE (EN50262: 1998 + A2: 2004)
- ROHS (Restriction of Hazardous Substances Directive) 2011/65/EU Annex II, 2002/95/EC
- REACH SVHC (67/548/EEC and Regulation No.1907/2006)

How locking ball works



Insert the tail into the buckle. Before the tie is tightened, the internal locking ball still rolls freely.



Once the proper tension is reached, use cable tie tool to cut off the tail. The ball then wedges into the buckle, locking it tightly against both the top and bottom of the band.



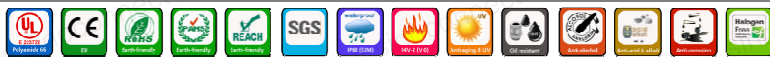


Diagram



Technical data

Item No.	Length (L)		Width (W)		Thickness (mm)	Max. Bundle Diameter		Min. Tensile Strength		Packing (pcs)						
	(mm)	(inch)	(mm)	(inch)		(mm)	(inch)	(lbs)	(N)							
FCCT-5x100	100	3.94"	4.6	0.18"	0.30	22	0.87"	130~220	600~1000	100						
FCCT-5x150	150	5.91"				35	1.38"									
FCCT-5x200	200	7.87"				50	1.97"									
FCCT-5x250	250	9.84"				65	2.56"									
FCCT-5x300	300	11.81"				82	3.23"									
FCCT-5x350	350	13.78"				90	3.54"									
FCCT-5x400	400	15.75"				105	4.14"									
FCCT-5x450	450	17.72"				130	5.12"									
FCCT-5x500	500	19.69"				140	5.51"									
FCCT-5x550	550	21.65"				162	6.38"									
FCCT-5x600	600	23.62"				185	7.28"									
FCCT-5x700	700	27.56"				205	8.07"									
FCCT-5x750	750	29.53"				223	8.78"									
FCCT-5x800	800	31.50"				235	9.25"									
FCCT-5x850	850	33.46"				250	9.84"									
FCCT-5x900	900	35.43"				260	10.24"									
FCCT-5x950	950	37.40"				272	10.71"									
FCCT-5x1000	1000	39.37"				290	11.42"									
FCCT-8x150	150	5.91"				7.9	0.31"				0.30	35	1.38"	240~380	1100~1700	100
FCCT-8x200	200	7.87"										50	1.97"			
FCCT-8x250	250	9.84"	65	2.56"												
FCCT-8x300	300	11.81"	82	3.23"												
FCCT-8x350	350	13.78"	90	3.54"												
FCCT-8x400	400	15.75"	105	4.14"												
FCCT-8x450	450	17.72"	130	5.12"												
FCCT-8x500	500	19.69"	140	5.51"												
FCCT-8x550	550	21.65"	162	6.38"												
FCCT-8x600	600	23.62"	185	7.28"												
FCCT-8x700	700	27.56"	205	8.07"												
FCCT-8x750	750	29.53"	223	8.78"												
FCCT-8x800	800	31.50"	235	9.25"												
FCCT-8x850	850	33.46"	250	9.84"												
FCCT-8x900	900	35.43"	260	10.24"												
FCCT-8x950	950	37.40"	272	10.71"												
FCCT-8x1000	1000	39.37"	290	11.42"												
FCCT-10x150	150	5.91"	10	0.39"	0.30			35	1.37"	260~400		1200~1800	100			
FCCT-10x200	200	7.87"						50	1.97"							
FCCT-10x250	250	9.84"						65	2.56"							
FCCT-10x300	300	11.81"				82	3.23"									
FCCT-10x350	350	13.78"				90	3.54"									
FCCT-10x400	400	15.75"				105	4.14"									
FCCT-10x450	450	17.72"				130	5.12"									
FCCT-10x500	500	19.69"				140	5.51"									
FCCT-10x550	550	21.65"				162	6.38"									
FCCT-10x600	600	23.62"				185	7.28"									
FCCT-10x650	650	25.59"				196	7.72"									
FCCT-10x700	700	27.56"				205	8.07"									
FCCT-10x750	750	29.53"				223	8.78"									
FCCT-10x800	800	31.50"				235	9.25"									
FCCT-12x150	150	5.91"				12	0.47"	0.35	35		1.37"			400~490	1800~2200	100
FCCT-12x200	200	7.87"							50		1.97"					
FCCT-12x250	250	9.84"							65		2.56"					
FCCT-12x300	300	11.81"							82		3.23"					
FCCT-12x350	350	13.78"							90		3.54"					
FCCT-12x400	400	15.75"							105		4.14"					
FCCT-12x450	450	17.72"	130	5.12"												
FCCT-12x500	500	19.69"	140	5.51"												
FCCT-12x550	550	21.65"	162	6.38"												
FCCT-12x600	600	23.62"	185	7.28"												
FCCT-12x700	700	27.56"	205	8.07"												
FCCT-12x750	750	29.53"	223	8.78"												
FCCT-12x800	800	31.50"	235	9.25"												
FCCT-12x850	850	33.46"	250	9.84"												
FCCT-12x900	900	35.43"	260	10.24"												
FCCT-12x950	950	37.40"	272	10.71"												
FCCT-12x1000	1000	39.37"	290	11.42"												
FCCT-16x200	200	7.87"	16	0.63"	0.45				50	1.97"	440~550	2000~2500	50			
FCCT-16x250	250	9.84"							65	2.56"						
FCCT-16x300	300	11.81"							82	3.23"						
FCCT-16x350	350	13.78"				90	3.54"									
FCCT-16x400	400	15.75"				105	4.14"									
FCCT-16x450	450	17.72"				130	5.12"									
FCCT-16x500	500	19.69"				140	5.51"									
FCCT-16x600	600	23.62"				185	7.28"									
FCCT-16x700	700	27.56"				205	8.07"									
FCCT-16x800	800	31.50"				235	9.25"									
FCCT-16x900	900	35.43"				260	10.24"									
FCCT-16x1000	1000	39.37"				290	11.42"									



	RAL5012
	RAL1016
	RAL2004
	RAL6018
	RAL7035
	RAL9010

**AISI304
AISI316
AISI316L**

Material

- Grade 304, 316 or 316L non-magnetic stainless steel with multicolored polyester coating
- Color: Multicolored band & stainless steel buckle

Structure

- Self-locking design with ball locking head & band

Operation temperature

- -80°C~+150°C (-112°F~+302°F)

Features

- Used in a wide range of indoor, outdoor, and underground uses
- Superior corrosion resistance provides maximum performance and longer service life in harsh environments
- Offer additional protection & separation of dissimilar metals for improved corrosion resistance
- Low profile, self-locking, ball bearing head mechanism with fully adjustable band provides quick and easy installation using hand tools
- Assures worker safety and bundle protection from abrasion and scratching during and after installation
- Colored stainless steel cable tie provides an easy, quick identification of specific cables and cords

How to use

Firstly bundle up the cables, wires or other objects by fully coated stainless steel cable tie, then Insert the band tail through the buckle, when the proper tension is reached, the internal locking ball won't roll freely, the tie is fully tightened, then cut off the tail by crimping tool.

Packing

- (A) Normal packing: Packed in polybag with neutral label + export carton
- (B) Special packing:
 - (1) Colorful printing polybag + export carton
 - (2) Colorful inner box + export carton
 - (3) OEM label, inner box, blister, etc.

Description

A 304, 316, 316L multi-color stainless steel cable tie (also known as a multi-color stainless steel zip tie) is a kind of fastener used for holding items together (primarily electrical cables, wires or pipes) and keep away from damage. It has a band section with a locking ball in the buckle. Due to its high tensile, durability and long service life, such cable ties are ubiquitous, finding use in a wide range of other applications.

Applications

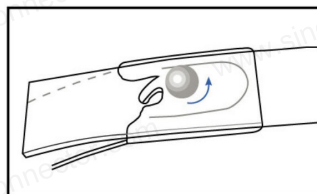
Mainly useful in applications where corrosion, vibration, general weathering, radiation, high temperature and hazardous areas:

- Shipbuilding
- Automotive
- Nuclear power
- Aerospace
- Construction
- Interurban locomotive
- Telecommunications
- Food and beverage processing
- Marine
- Machinery
- Solar equipment
- Mining and railroad
- Petroleum and chemical industry
- General industry
- Fire protection
- Offshore facilities

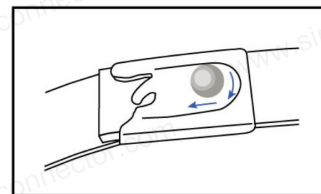
Conforms to

- CE (EN50262: 1998 + A2: 2004)
- ROHS (Restriction of Hazardous Substances Directive) 2011/65/EU Annex II, 2002/95/EC
- REACH SVHC (67/548/EEC and Regulation No.1907/2006)

How locking ball works



Insert the tail into the buckle. Before the tie is tightened, the internal locking ball still rolls freely.



Once the proper tension is reached, use cable tie tool to cut off the tail. The ball then wedges into the buckle, locking it tightly against both the top and bottom of the band.





■ Diagram



■ Technical data

Item No.	Length (L)		Width (W)		Thickness (mm)	Max. Bundle Diameter		Min. Tensile Strength		Packing (pcs)						
	(mm)	(inch)	(mm)	(inch)		(mm)	(inch)	(lbs)	(N)							
SCCT-5x100	100	3.94"	4.6	0.18"	0.30	22	0.87"	130~220	600~1000	100						
SCCT-5x150	150	5.91"				35	1.38"									
SCCT-5x200	200	7.87"				50	1.97"									
SCCT-5x250	250	9.84"				65	2.56"									
SCCT-5x300	300	11.81"				82	3.23"									
SCCT-5x350	350	13.78"				90	3.54"									
SCCT-5x400	400	15.75"				105	4.14"									
SCCT-5x450	450	17.72"				130	5.12"									
SCCT-5x500	500	19.69"				140	5.51"									
SCCT-5x550	550	21.65"				162	6.38"									
SCCT-5x600	600	23.62"				185	7.28"									
SCCT-5x700	700	27.56"				205	8.07"									
SCCT-5x750	750	29.53"				223	8.78"									
SCCT-5x800	800	31.50"				235	9.25"									
SCCT-5x850	850	33.46"				250	9.84"									
SCCT-5x900	900	35.43"				260	10.24"									
SCCT-5x950	950	37.40"				272	10.71"									
SCCT-5x1000	1000	39.37"				290	11.42"									
SCCT-8x150	150	5.91"				7.9	0.31"				0.30	35	1.38"	240~380	1100~1700	100
SCCT-8x200	200	7.87"										50	1.97"			
SCCT-8x250	250	9.84"	65	2.56"												
SCCT-8x300	300	11.81"	82	3.23"												
SCCT-8x350	350	13.78"	90	3.54"												
SCCT-8x400	400	15.75"	105	4.14"												
SCCT-8x450	450	17.72"	130	5.12"												
SCCT-8x500	500	19.69"	140	5.51"												
SCCT-8x550	550	21.65"	162	6.38"												
SCCT-8x600	600	23.62"	185	7.28"												
SCCT-8x700	700	27.56"	205	8.07"												
SCCT-8x750	750	29.53"	223	8.78"												
SCCT-8x800	800	31.50"	235	9.25"												
SCCT-8x850	850	33.46"	250	9.84"												
SCCT-8x900	900	35.43"	260	10.24"												
SCCT-8x950	950	37.40"	272	10.71"												
SCCT-8x1000	1000	39.37"	290	11.42"												
SCCT-10x150	150	5.91"	10	0.39"	0.30			35	1.37"	260~400		1200~1800	100			
SCCT-10x200	200	7.87"						50	1.97"							
SCCT-10x250	250	9.84"						65	2.56"							
SCCT-10x300	300	11.81"				82	3.23"									
SCCT-10x350	350	13.78"				90	3.54"									
SCCT-10x400	400	15.75"				105	4.14"									
SCCT-10x450	450	17.72"				130	5.12"									
SCCT-10x500	500	19.69"				140	5.51"									
SCCT-10x550	550	21.65"				162	6.38"									
SCCT-10x600	600	23.62"				185	7.28"									
SCCT-10x650	650	25.59"				196	7.72"									
SCCT-10x700	700	27.56"				205	8.07"									
SCCT-10x750	750	29.53"				223	8.78"									
SCCT-10x800	800	31.50"				235	9.25"									
SCCT-12x150	150	5.91"				12	0.47"	0.35	35		1.37"			400~490	1800~2200	100
SCCT-12x200	200	7.87"							50		1.97"					
SCCT-12x250	250	9.84"							65		2.56"					
SCCT-12x300	300	11.81"							82		3.23"					
SCCT-12x350	350	13.78"							90		3.54"					
SCCT-12x400	400	15.75"							105		4.14"					
SCCT-12x450	450	17.72"	130	5.12"												
SCCT-12x500	500	19.69"	140	5.51"												
SCCT-12x550	550	21.65"	162	6.38"												
SCCT-12x600	600	23.62"	185	7.28"												
SCCT-12x700	700	27.56"	205	8.07"												
SCCT-12x750	750	29.53"	223	8.78"												
SCCT-12x800	800	31.50"	235	9.25"												
SCCT-12x850	850	33.46"	250	9.84"												
SCCT-12x900	900	35.43"	260	10.24"												
SCCT-12x950	950	37.40"	272	10.71"												
SCCT-12x1000	1000	39.37"	290	11.42"												
SCCT-16x200	200	7.87"	16	0.63"	0.45				50	1.97"	440~550	2000~2500	50			
SCCT-16x250	250	9.84"							65	2.56"						
SCCT-16x300	300	11.81"							82	3.23"						
SCCT-16x350	350	13.78"				90	3.54"									
SCCT-16x400	400	15.75"				105	4.14"									
SCCT-16x450	450	17.72"				130	5.12"									
SCCT-16x500	500	19.69"				140	5.51"									
SCCT-16x600	600	23.62"				185	7.28"									
SCCT-16x700	700	27.56"				205	8.07"									
SCCT-16x800	800	31.50"				235	9.25"									
SCCT-16x900	900	35.43"				260	10.24"									
SCCT-16x1000	1000	39.37"				290	11.42"									