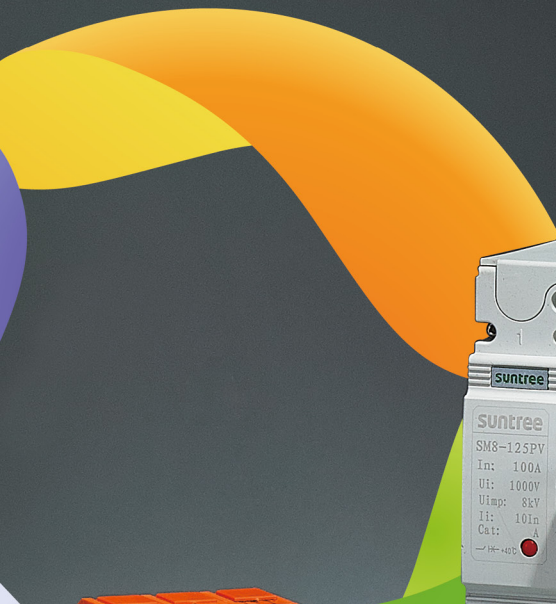


SOLAR SYSTEM(PV)

www.xinchi.cc





DC MINIATURE CIRCUIT BREAKER

SL7

Pole: 1P/2P/3P/4P

Rated operating voltage: 4P DC 1000V/1200V

Ultimate breaking capacity I_{cu} (kA): 6kA

Rated Current I_n (A): 6-10-16-20-25-32-40-50-63

Rated insulation voltage U_i (V DC): 2P: 800V 4P: 1200V

Rated Impact voltage U_{imp} (kV): 4

Ultimate breaking capacity I_{cu} (kA): 6



NON-
POLARITY





**NON-
POLARITY**

SM8-PV

Rated Current I_n (A): 125:63A,80A,100A,125A
 250:160A,200A,225A,250A
 400:320A,400A

U_e Rated operating voltage (VDC): 3P 750V 4P DC1000V

Rated insulation voltage U_i (VDC): DC1000V

Rated Impact voltage U_{imp} (kV): 8KV

Ultimate breaking capacity I_{cu} (kV): 25KV

DC

**MOLDED
CASE CIRCUIT
BREAKER**

DC SURGE PROTECTOR DEVICES

SUP4-PV

Nominal PV System Voltage: 1000V/1200V/1500V

MCOV [UCPV]: 1170Vdc/1200Vdc/1500Vdc

Max System Discharge Current (8/20 μ s) [Imax]: 40kA/30kA/30kA

Voltage Protection Level [UP]: $\leq 4.0kV / \leq 4.5kV / \leq 4.5kV$

Voltage Protection Level at 5kA [UP]: $\leq 3.5kV / \leq 4.0kV / \leq 4.0kV$

DC Switching Capacity (Volts/Amps): 250V/0.1A; 125V/0.2A; 75V/0.5A

NON-
POLARITY



DC / MOLDED CASE CIRCUIT BREAKER

CH10-30

Nominal PV System Voltage: 1000V/1200V/1500V
 MCOV [UCPV]: 1170Vdc/1200Vdc/1500Vdc
 Max System Discharge Current (8/20 μ s) [Imax]: 40kA/30kA/30kA
 Voltage Protection Level [UP]: $\leq 4.0kV / \leq 4.5kV / \leq 4.5kV$
 Voltage Protection Level at 5kA [UP]: $\leq 3.5kV / \leq 4.0kV / \leq 4.0kV$
 DC Switching Capacity (Volts/Amps): 250V/0.1A; 125V/0.2A; 75V/0.5A



**NON-
POLARITY**



SGL-PV

Pole: 1P/2P/3P/4P

Rated operating voltage: 4P DC 1000V/1200V

Ultimate breaking capacity I_{cu} (kA): 6kA

Rated Current I_n (A): 6-10-16-20-25-32-40-50-63

Rated insulation voltage U_i (V DC): 2P: 800V 4P: 1200V

Rated Impact voltage U_{imp} (kV): 4

Ultimate breaking capacity I_{cu} (kA): 6

DC SWITCH-DISCONNECTORS

DC

PV SWITCH DISCONNECTORS

SISO

Rated Voltage: 1000VDC TO 1200VDC

IP Rating: IP66

Connection Type: M20 M25 MC4

Rated Current: 10A,16A,20A,25A, 32A

Working Temperature: -25°C ~+85°C

Standard: IEC60947-3, AS/NZS60947.3:2015



**NON-
POLARITY**



SOLAR SYSTEM(PV)

www.xinchi.cc





suntree
SM8-125PV
In: 100A
Ui: 1000V
Ui_{imp}: 8kV
Ii: 101n
Cat: A

CB
I_{os}=75%I_{cu}
U_e I_{cu}
1000V=20kA
IEC 60947-2
GB 14048.2

suntree
SUP4-S40
Surge Protective Device

U _n : 1000VDC	U _n : 1000VDC	U _n : 1000VDC
U _{1p} : 1000VDC	U _{1p} : 1000VDC	U _{1p} : 1000VDC
I _n : 20kA	I _n : 20kA	I _n : 20kA
I _{max} : 40kA	I _{max} : 40kA	I _{max} : 40kA
U _p : 3.2kV	U _p : 3.2kV	U _p : 3.2kV

suntree
CH-10
PV
DC 10
1000V
10kA

suntree
DC Surge PV
10kA 1000V

suntree
SUP4-S40
Surge Protective Device PV

U _n : 1500VDC	U _n : 1500VDC
I _n : 20kA	I _n : 20kA
I _{max} : 40kA	I _{max} : 40kA
U _p : 5.0kV	U _p : 5.0kV

AC MINIATURE CIRCUIT BREAKER

SCB8

Nominal PV System Voltage: 1000V/1200V/1500V

MCOV [UCPV]: 1170Vdc/1200Vdc/1500Vdc

Max System Discharge Current (8/20 μ s) [Imax]: 40kA/30kA/30kA

Voltage Protection Level [UP]: ≤ 4.0 kV / ≤ 4.5 kV / ≤ 4.5 kV

Voltage Protection Level at 5kA [UP]: ≤ 3.5 kV / ≤ 4.0 kV / ≤ 4.0 kV

DC Switching Capacity (Volts/Amps): 250V/0.1A; 125V/0.2A; 75V/0.5A





NON-POLARITY



SM8

Rated Current I_n (A): 125:63A,80A,100A,125A
 250:160A,200A,225A,250A 400:320A,400A
 Ue Rated operating voltage (VDC): 3P 750V 4P DC1000V
 Rated insulation voltage U_i (VDC): DC1000V
 Rated Impact voltage U_{imp} (kV): 8KV
 Ultimate breaking capacity I_{cu} (kV): 25KV

AC

**MOLDED
CASE CIRCUIT
BREAKER**



SUP-C

Nominal PV System Voltage: 1000V/1200V/1500V

MCOV [UCPV]: 1170Vdc/1200Vdc/1500Vdc

Max System Discharge Current (8/20 μ s) [I_{max}]: 40kA/30kA/30kA

Voltage Protection Level [UP]: $\leq 4.0kV / \leq 4.5kV / \leq 4.5kV$

Voltage Protection Level at 5kA [UP]: $\leq 3.5kV / \leq 4.0kV / \leq 4.0kV$

DC Switching Capacity (Volts/Amps): 250V/0.1A; 125V/0.2A; 75V/0.5A

AC

SURGE PROTECTIVE DEVICES

AC DC / AIR CIRCUIT BREAK

SW8

Nominal PV System Voltage: 1000V/1200V/1500V

MCOV [UCPV]: 1170Vdc/1200Vdc/1500Vdc

Max System Discharge Current (8/20 μ s) [Imax]: 40kA/30kA/30kA

Voltage Protection Level [UP]: $\leq 4.0kV / \leq 4.5kV / \leq 4.5kV$

Voltage Protection Level at 5kA [UP]: $\leq 3.5kV / \leq 4.0kV / \leq 4.0kV$

DC Switching Capacity (Volts/Amps): 250V/0.1A; 125V/0.2A; 75V/0.5A

NON-
POLARITY



AC GRID-CONNECTED PV MCB

SCB8ZY-80

Nominal PV System Voltage: 1000V/1200V/1500V

MCOV [UCPV]: 1170Vdc/1200Vdc/1500Vdc

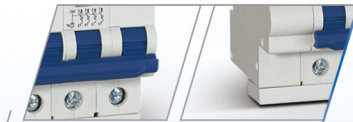
Max System Discharge Current (8/20 μ s) [Imax]: 40kA/30kA/30kA

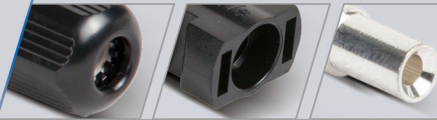
Voltage Protection Level [UP]: $\leq 4.0kV / \leq 4.5kV / \leq 4.5kV$

Voltage Protection Level at 5kA [UP]: $\leq 3.5kV / \leq 4.0kV / \leq 4.0kV$

DC Switching Capacity (Volts/Amps): 250V/0.1A; 125V/0.2A; 75V/0.5A

NON-
POLARITY





MC4

Nominal PV System Voltage: 1000V/1200V/1500V

MCOV [UCPV]: 1170Vdc/1200Vdc/1500Vdc

Max System Discharge Current (8/20 μ s) [I_{max}]: 40kA/30kA/30kA

Voltage Protection Level [UP]: ≤ 4.0 kV/ ≤ 4.5 kV/ ≤ 4.5 kV

Voltage Protection Level at 5kA [UP]: ≤ 3.5 kV/ ≤ 4.0 kV/ ≤ 4.0 kV

DC Switching Capacity (Volts/Amps): 250V/0.1A; 125V/0.2A; 75V/0.5A

AC

JOINT