

TKS 凯赛电气

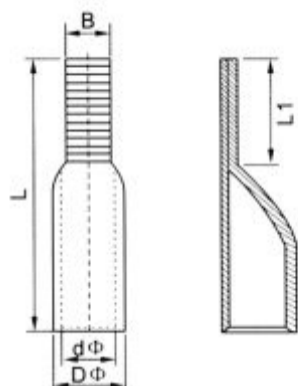
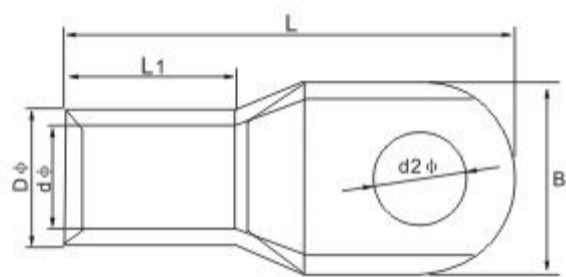
——冷压接线端头及接头专业制造商



乐清凯赛电气有限公司
YUEQING KAISAI ELECTRIC CO., LTD.

材质：紫铜

窥口铜接线端头(DTGA型) COPPER TUBE TERMINALS



型号 ITEM NO	螺栓口直径	尺寸DIMENSION					导线截面 CLBLE SQ
	d2φ	B	dφ	Dφ	L1	L	
SC1.5-5	5.2	8.0	1.8	3.7	5	16	1.5
SC2.5-4	4.2	8.0	2.4	4.0	7	18	2.5
SC2.5-5	5.2					20	
SC4-5	5.2	10.0	3.1	4.8	7	20	4
SC4-6	6.5						
SC6-5	5.2	10.0	3.8	5.5	9	24	6
SC6-6	6.5						
SC10-6	6.5	12.6	5	6.5	9	26	10
SC10-8	8.4						
SC16-6	6.5	12.6	5.7	7.5	11	30	16
SC16-8	8.4						
SC25-6	6.5	15.0	7.2	9	13	35	25
SC25-8	8.4						
SC35-8	8.4	15.2	8.5	10.8	13.5	38	35
SC35-10	10.5						
SC50-8	8.4	18.5	9.8	12.5	16	44	50
SC50-10	10.5						
SC70-10	10.5	21.4	11.5	14.5	18	51	70
SC70-12	13.0						
SC95-10	10.5	25.5	13.7	17	22	57	95
SC95-12	13						
SC120-12	13	28.3	15	19	24	64	120
SC120-16	17						
SC150-12	13	31.0	16.7	21	26	71	150
SC150-16	17						
SC185-16	17	39.0	21	26	38	93	240
SC240-16	17						
SC240-20	21	44.0	24.5	30	42	103	300
SC300-16	17						
SC300-20	21	51.0	27	34	42	113	400
SC400-16	17						
SC400-20	21	63.0	30	38	48	123	500
SC500-16	17						
SC500-20	21						

C45插针裸端头

C45 INSERT NEEDLE NAKED TERMINALS

型号 ITEM NO	尺寸DIMENSION				
	Dφ	dφ	L	L1	B
C-10 ²	7.5	5	34	13.5	7
C-16 ²	8.5	6	35	14	7
C-25 ²	10	7	36	14.5	7
C-35 ²	11	8	37	15	7
C-50 ²	13	10	41	15.5	7
C-70 ²	16	12	45	16	7
C-95 ²	18	14	50	18	9
C-120 ²	20	15	57	20	9
C-150 ²	22	17	67	24	9
C-185 ²	24	19	77	28	9
C-240 ²	26	21	85	31	9