



Test Report

Date: June 29, 2020

Report No.: WUX202006221888R

Applicant : YUEQING KAISAI ELECTRIC CO.,LTD
Address : DIAN HOU INDUSTRY ZONE LIUSHI TOWN YUEQING CITY ZHEJIANG
Manufacturer : YUEQING KAISAI ELECTRIC CO.,LTD
Address : DIAN HOU INDUSTRY ZONE LIUSHI TOWN YUEQING CITY ZHEJIANG

The following sample(s) was/were submitted and identified on behalf of the clients as: Wire Connector

Model(s) : RV, SV, VE, TE, EN, RNB, SNB
Trade Mark : /
Date of issue : June 29, 2020
Testing Period : June 22, 2020 to June 29, 2020

Test Requested : Selected test(s) as requested by client.

Test Method : Please refer to next page(s).

Test Results : Please refer to next page(s).

Conclusion : Based on the performed tests on submitted samples, the results of Lead, Mercury, Cadmium, Hexavalent chromium, Polybrominated biphenyls (PBB), Polybrominated diphenyl ethers (PBDE), Dibutyl Phthalate (DBP), Benzylbutyl Phthalate (BBP), Bis-(2-ethylhexyl) Phthalate (DEHP), Diiso butyl Phthalate (DIBP) comply with the limits as set by RoHS Directive 2011/65/EU Annex II amending Annex (EU)2015/863 and amending Annex (EU)2017/2102

Tested by: *Nelson Liu*

Approved by: *Long*

Test Report

Date: June 29, 2020

Report No.: WUX202006221888R

A:RoHS Directive 2011/65/EU

- (1)With reference to IEC 62321-5:2013, determination of Cadmium by ICP-OES.
 (2)With reference to IEC 62321-5:2013, determination of Lead by ICP-OES.
 (3)With reference to IEC 62321-4:2013, determination of Mercury by ICP-OES.
 (4)With reference to IEC 62321-7-2:2017, determination of Hexavalent Chromium by Colorimetric Method using UV-Vis.
 (5)With reference to IEC 62321-6:2015, determination of PBBs and PBDEs by GC-MS. .

Test Item(s)	Unit	Limited(ppm)	Result 1	MDL
Cadmium (Cd)	mg/kg	100	N.D.	2
Lead (Pb)	mg/kg	1000	N.D.	2
Mercury (Hg)	mg/kg	1000	N.D.	2
Hexavalent Chromium (CrVI) byAlkaline extraction	mg/kg	1000	N.D.	2
Sum of PBBs	mg/kg	1000	N.D.	-
Monobromobiphenyl	mg/kg	-	N.D.	5
Dibromobiphenyl	mg/kg	-	N.D.	5
Tribromobiphenyl	mg/kg	-	N.D.	5
Pentabromobiphenyl	mg/kg	-	N.D.	5
Hexabromobiphenyl	mg/kg	-	N.D.	5
Heptabromobiphenyl	mg/kg	-	N.D.	5
Octabromobiphenyl	mg/kg	-	N.D.	5
Nonabromobiphenyl	mg/kg	-	N.D.	5
Decabromobiphenyl	mg/kg	-	N.D.	5
Sum of PBDEs	mg/kg	1000	N.D.	-
Monobromobiphenyl ether	mg/kg	-	N.D.	5
Dibromobiphenyl ether	mg/kg	-	N.D.	5
Tribromobiphenyl ethe ether	mg/kg	-	N.D.	5
Pentabromobiphenyl ether	mg/kg	-	N.D.	5
Hexabromobiphenyl ether	mg/kg	-	N.D.	5
Heptabromobiphenyl ether	mg/kg	-	N.D.	5
Octabromobiphenyl ether	mg/kg	-	N.D.	5
Nonabromobiphenyl ether	mg/kg	-	N.D.	5
Decabromobiphenyl ether	mg/kg	-	N.D.	5



HUACETONG

Test Report

Date: June 29, 2020

Report No.: WUX202006221888R

Test Item(s)	Unit	Limited(ppm)	Result 2	MDL
Cadmium (Cd)	mg/kg	100	N.D.	2
Lead (Pb)	mg/kg	1000	N.D.	2
Mercury (Hg)	mg/kg	1000	N.D.	2
Hexavalent Chromium (CrVI) byAlkaline extraction	mg/kg	1000	N.D.	2
Sum of PBBs	mg/kg	1000	N.D.	-
Monobromobiphenyl	mg/kg	-	N.D.	5
Dibromobiphenyl	mg/kg	-	N.D.	5
Tribromobiphenyl	mg/kg	-	N.D.	5
Pentabromobiphenyl	mg/kg	-	N.D.	5
Hexabromobiphenyl	mg/kg	-	N.D.	5
Heptabromobiphenyl	mg/kg	-	N.D.	5
Octabromobiphenyl	mg/kg	-	N.D.	5
Nonabromobiphenyl	mg/kg	-	N.D.	5
Decabromobiphenyl	mg/kg	-	N.D.	5
Sum of PBDEs	mg/kg	1000	N.D.	-
Monobromobiphenyl ether	mg/kg	-	N.D.	5
Dibromobiphenyl ether	mg/kg	-	N.D.	5
Tribromobiphenyl ethe ether	mg/kg	-	N.D.	5
Pentabromobiphenyl ether	mg/kg	-	N.D.	5
Hexabromobiphenyl ether	mg/kg	-	N.D.	5
Heptabromobiphenyl ether	mg/kg	-	N.D.	5
Octabromobiphenyl ether	mg/kg	-	N.D.	5
Nonabromobiphenyl ether	mg/kg	-	N.D.	5
Decabromobiphenyl ether	mg/kg	-	N.D.	5



HUACETONG

Test Report

Date: June 29, 2020

Report No.: WUX202006221888R

Test Item(s)	Unit	Limited(ppm)	Result 3	MDL
Cadmium (Cd)	mg/kg	100	N.D.	2
Lead (Pb)	mg/kg	1000	N.D.	2
Mercury (Hg)	mg/kg	1000	N.D.	2
Hexavalent Chromium (CrVI) byAlkaline extraction	mg/kg	1000	N.D.	2
Sum of PBBs	mg/kg	1000	N.D.	-
Monobromobiphenyl	mg/kg	-	N.D.	5
Dibromobiphenyl	mg/kg	-	N.D.	5
Tribromobiphenyl	mg/kg	-	N.D.	5
Pentabromobiphenyl	mg/kg	-	N.D.	5
Hexabromobiphenyl	mg/kg	-	N.D.	5
Heptabromobiphenyl	mg/kg	-	N.D.	5
Octabromobiphenyl	mg/kg	-	N.D.	5
Nonabromobiphenyl	mg/kg	-	N.D.	5
Decabromobiphenyl	mg/kg	-	N.D.	5
Sum of PBDEs	mg/kg	1000	N.D.	-
Monobromobiphenyl ether	mg/kg	-	N.D.	5
Dibromobiphenyl ether	mg/kg	-	N.D.	5
Tribromobiphenyl ethe ether	mg/kg	-	N.D.	5
Pentabromobiphenyl ether	mg/kg	-	N.D.	5
Hexabromobiphenyl ether	mg/kg	-	N.D.	5
Heptabromobiphenyl ether	mg/kg	-	N.D.	5
Octabromobiphenyl ether	mg/kg	-	N.D.	5
Nonabromobiphenyl ether	mg/kg	-	N.D.	5
Decabromobiphenyl ether	mg/kg	-	N.D.	5



HUACETONG

Test Report

Date: June 29, 2020

Report No.: WUX202006221888R

Test Item(s)	Unit	Limited(ppm)	Result 4	MDL
Cadmium (Cd)	mg/kg	100	N.D.	2
Lead (Pb)	mg/kg	1000	N.D.	2
Mercury (Hg)	mg/kg	1000	N.D.	2
Hexavalent Chromium (CrVI) byAlkaline extraction	mg/kg	1000	N.D.	2
Sum of PBBs	mg/kg	1000	N.D.	-
Monobromobiphenyl	mg/kg	-	N.D.	5
Dibromobiphenyl	mg/kg	-	N.D.	5
Tribromobiphenyl	mg/kg	-	N.D.	5
Pentabromobiphenyl	mg/kg	-	N.D.	5
Hexabromobiphenyl	mg/kg	-	N.D.	5
Heptabromobiphenyl	mg/kg	-	N.D.	5
Octabromobiphenyl	mg/kg	-	N.D.	5
Nonabromobiphenyl	mg/kg	-	N.D.	5
Decabromobiphenyl	mg/kg	-	N.D.	5
Sum of PBDEs	mg/kg	1000	N.D.	-
Monobromobiphenyl ether	mg/kg	-	N.D.	5
Dibromobiphenyl ether	mg/kg	-	N.D.	5
Tribromobiphenyl ethe ether	mg/kg	-	N.D.	5
Pentabromobiphenyl ether	mg/kg	-	N.D.	5
Hexabromobiphenyl ether	mg/kg	-	N.D.	5
Heptabromobiphenyl ether	mg/kg	-	N.D.	5
Octabromobiphenyl ether	mg/kg	-	N.D.	5
Nonabromobiphenyl ether	mg/kg	-	N.D.	5
Decabromobiphenyl ether	mg/kg	-	N.D.	5

Test Report

Date: June 29, 2020

Report No.: WUX202006221888R

B:Phthalate

Test Method : Determination of phthalates by GC-MS based on IEC 62321-8:2017.

Test Item(s)	Unit	Limited(ppm)	Result 1
Dibutyl Phthalate (DBP)	mg/kg	1000	ND
Benzylbutyl Phthalate (BBP)	mg/kg	1000	ND
Bis-(2-ethylhexyl) Phthalate (DEHP)	mg/kg	1000	ND
Diiso butyl Phthalate (DIBP)	mg/kg	1000	ND

Test Item(s)	Unit	Limited(ppm)	Result 2
Dibutyl Phthalate (DBP)	mg/kg	1000	ND
Benzylbutyl Phthalate (BBP)	mg/kg	1000	ND
Bis-(2-ethylhexyl) Phthalate (DEHP)	mg/kg	1000	ND
Diiso butyl Phthalate (DIBP)	mg/kg	1000	ND

Test Item(s)	Unit	Limited(ppm)	Result 3
Dibutyl Phthalate (DBP)	mg/kg	1000	ND
Benzylbutyl Phthalate (BBP)	mg/kg	1000	ND
Bis-(2-ethylhexyl) Phthalate (DEHP)	mg/kg	1000	ND
Diiso butyl Phthalate (DIBP)	mg/kg	1000	ND

Description for specimen 1: Red plastic parts

Description for specimen 2:Blue plastic parts

Description for specimen 3:Yellow plastic parts

Description for specimen 4:Metal



Test Report

Date: June 29, 2020

Report No.: WUX202006221888R

Notes :

(1) Reference Information: RoHS Directive 2011/65/EU Annex II amending Annex (EU)2015/863 and amending Annex (EU)2017/2102

Bis (2-ethylhexyl) phthalate (DEHP), Butyl benzyl phthalate (BBP), Diiso butyl Phthalate (DIBP) and Dibutyl phthalate (DBP) are considered as a priority for risk evaluation and substance restriction.

Remarks :

- (1) 1 mg/kg = 1 ppm = 0.0001%
- (2) MDL = Method Detection Limit
- (3) ND = Not Detected (< MDL)
- (4) "-" = Not Regulated



HUACETONG

Test Report

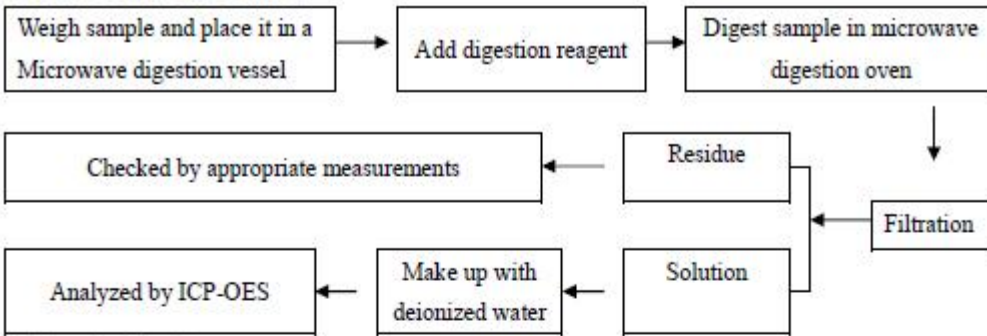
Date: June 29, 2020

Report No.: WUX202006221888R

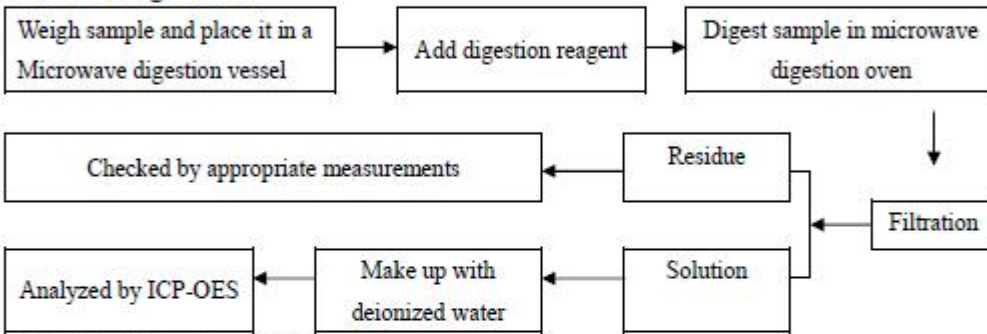
ATTACHMENTS

Test process

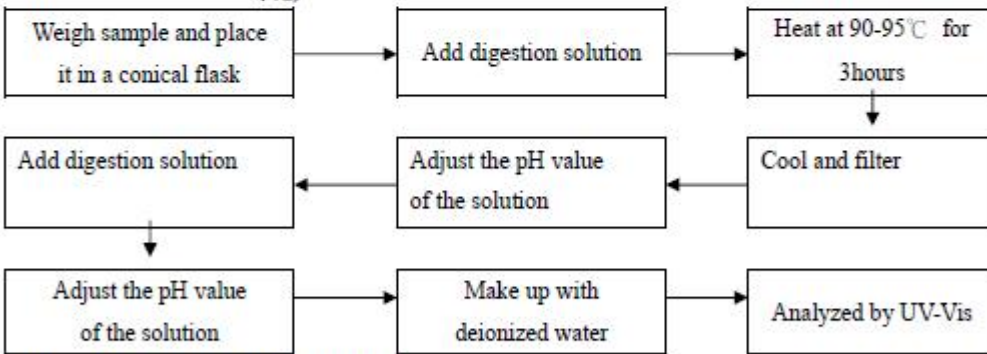
1. Test for Pb/Cd Content



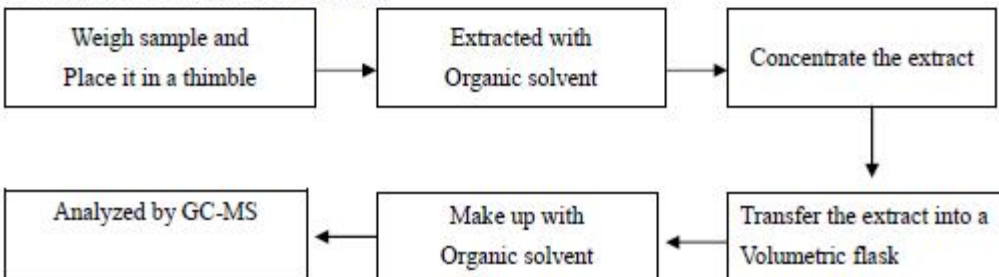
2. Test for Hg Content



3. Test for Chromium (VI) Content



4. Test for PBBs/PBDEs Content

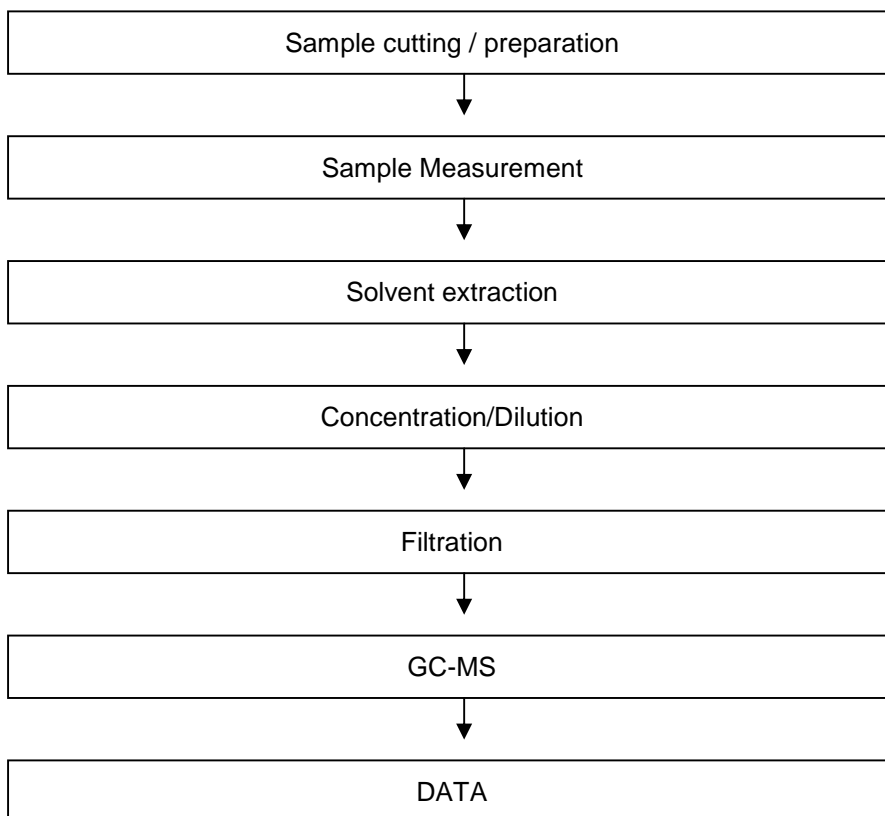


Test Report

Date: June 29, 2020

Report No.: WUX202006221888R

Phthalates Testing Flow Chart

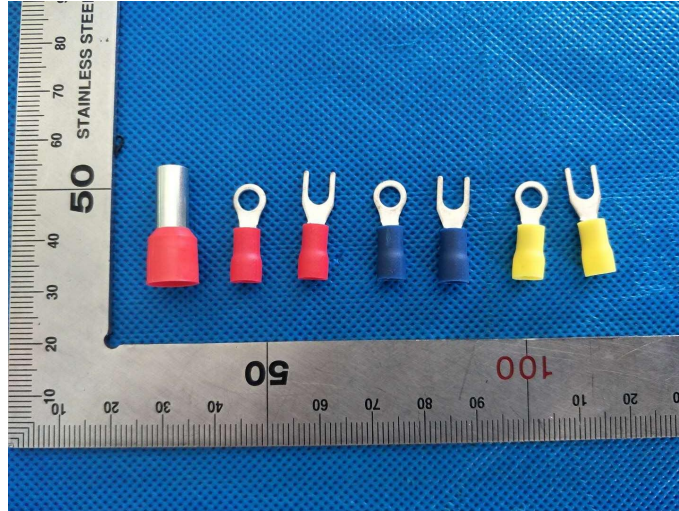


Test Report

Date: June 29, 2020

Report No.: WUX202006221888R

Sample photo:



End of Report