



Address : Commercial Building No.18,Yingbin Road,Fengnan,Tangshan



Tel : 0086-0315-8105868 Fax : 0086-0315-8592288



Http://www.zcebox.com E-mail:zcebox@zcebox.com



LOW VOLTAGE ELECTRIC

TANGSHAN ZHENGCHENG ELECTRIC CO., LTD.

Catalog



Company Profile

Founded in 2010 and located in Tangshan city Hebei province, Tangshan Zhengcheng Electric Co., Ltd plays a leading role in manufacturing various of distribution boxes used for residential, commercial and industrial area with OEM and OEM business. Subordinating to Zhengcheng Electric, ZCEBOX who has the ability to produce millions pcs of products annually with it's own complete set of automatic feeding system and the manipulator operation equipment is mainly producing the consumer units, waterproof distribution box , classical type distribution box and waterproof junction box for the corporation.



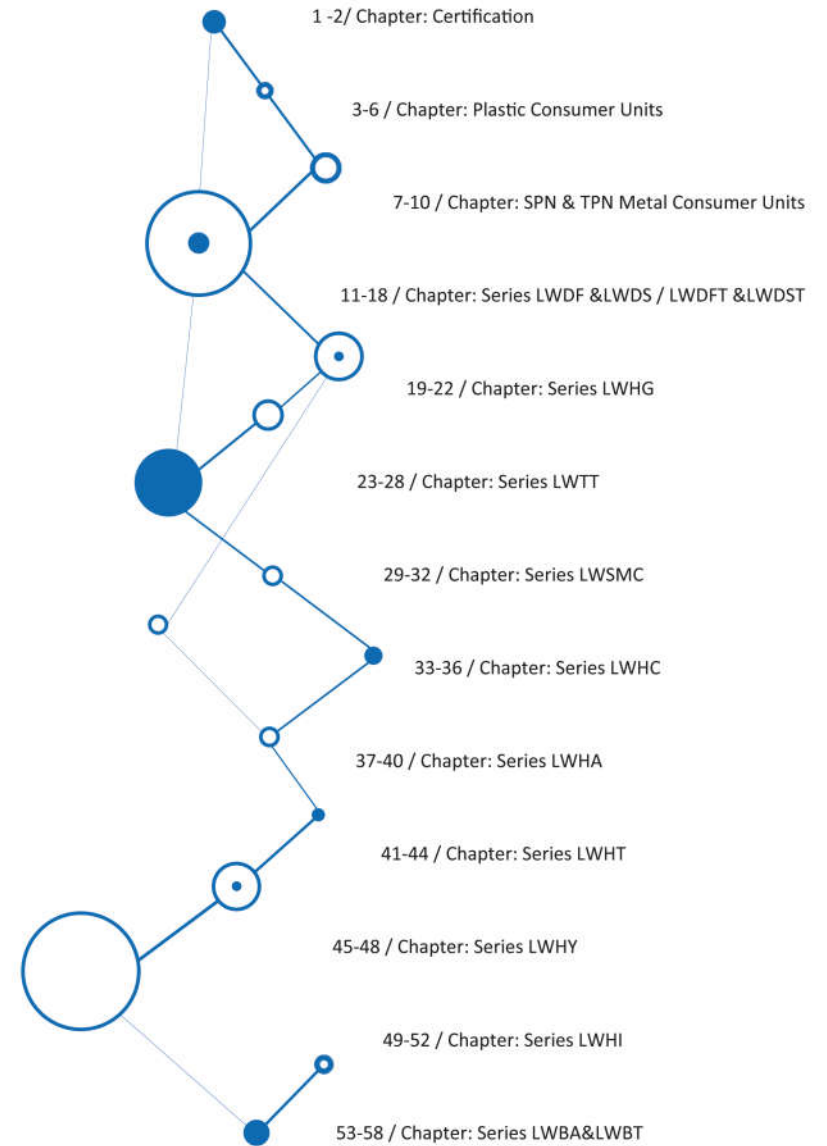
Adhering to the independent innovation and scientific management principles, ZCEBOX has built up an outstanding design team to create new products and moulds so that the products can satisfy different customers' personalized requirements. It proves that the corporation has the ability to carry over the customers' ideas, understanding and innovation to product design perfectly. The aim of the corporation is to devote himself to transforming the customers' ideas into the added value of the product and maximizing the value of the product.



Our vision: To be the most trusted partner of our customer

Our Mission: To create the greatest value for our customer continuously

Our service tenet: Customer-Oriented



ISO



CE



ROHS



HF



IK



IP



Consumer Unit

- ➔ Plastic Consumer Units
- ➔ SPN&TPN Metal Consumer Units



Waterproof DB Box

- ➔ LWHC
- ➔ LWHT



Waterproof Junction Box

- ➔ LWHY
- ➔ LWHI
- ➔ LWBA&LWBT



Classical DB Box

- ➔ LWDF&LWDS / LWDF & LWDT
- ➔ LWHG
- ➔ LWTT



TANGSHAN ZHENGCHENG ELECTRIC CO., LTD.



Introduction

LWHA series boxes are designed for outdoor usage. ABS body, PC door and rubber seals make the production level up to IP65. Spacious inner space is suitable for installing large elements in the box and make connection more convenient. Whatever domestic or industrial usage, it is a better choice.

Technical Specification

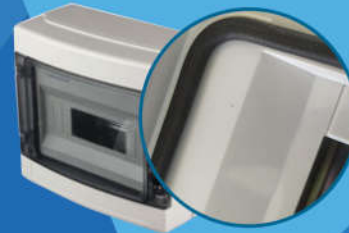
- Standard: IEC60439-3
- Approval: CE, RoHS, HF test, IK test, ISO9001
- Modules (No.): 4; 8; 12; 18; 24
- Protection degree: IP65
- Material: Box shell: ABS; Door: PC; Zero bar/earth bar: copper
- Ambient temperature: -5~+40°C, max. 50% humidity permitted under max +40°C
- Storage temperature: -40~+75°C
- Color of base: Gray
- Color of door: Transparent
- Mounting type: Surface
- Fire resistance: 650 °C/30s

Accessories Introduced



Window:

Turnover transparent PC window with automatic lock



Black Cushion

The cushion makes sealing performance of box better, and waterproof rating up to IP65



Din Rail

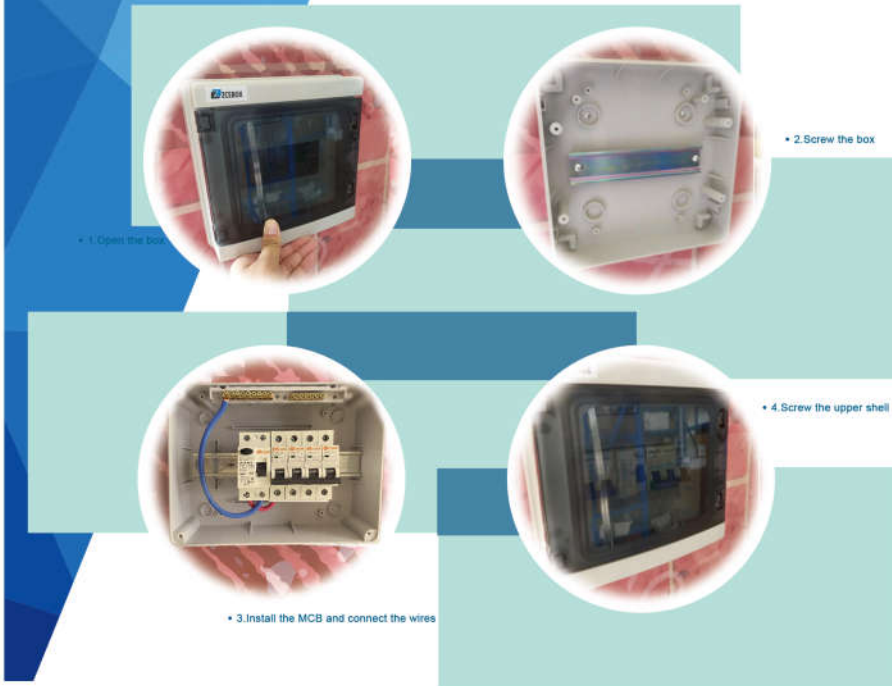
Din-rail: 35mm standard din-rail mounted








Terminal bar

Optional terminal

Installation Instructions



Product	Model	Din-rail (mm)	Terminal bar	(P)L*W*H (mm)	QTY/CTN	(C)W*H*D (mm)
	LWHA-4	110	3+3	140*210*100	20	540*445*310
	LWHA-8	160	4+4	215*210*100	20	540*445*460
	LWHA-12	250	6+6	300*260*140	10	720*310*535
	LWHA-18	360	9+9	410*285*140	5	730*305*435
	LWHA-24	240	6+6 6+6	415*300*140	5	745*315*445